

## Integration Note

Manufacturer:	Rotel
Model Number(s):	T11 DAB Tuner (RS232)
g! Core Module Version:	8.0.278
Driver Developer:	Core Programming Limited
Document Revision Date:	03/01/2017

### Overview & Supported Features

This driver allows a g! system to communicate with an Rotel T11 DAB Tuner over RS232 (Serial).

**THE FOLLOWING OPTIONS ARE SUPPORTED BY THIS DRIVER:**

**Navigation & Transport control:** This driver supports the following commands:

Cursor Up, Down, Left & Right  
Number Input  
Channel Up/Down  
Scan Up/Down  
Channel Name/Info  
Front panel display is replicated on viewer  
First 12 Presets are loaded from tuner

Any feature not specifically noted as supported should be assumed to be unsupported.

## CONNECTION DIAGRAM: RS-232 CONTROL

Refer to the Bill of Materials and Wiring Diagram that follow.



## BILL OF MATERIALS

#	Device	Manufacturer	Part Number	Protocol	Connector Type
1	DAB Tuner	Rotel	T11	RS-232	DB-9 Female
2	g! Controller	ELAN	Various (e.g. SC2)	RS-232	RJ-45 Female x DB-9 Male
3	DB-9 to RJ45 Adapter	ELAN	HA-CB-307	RS-232	RJ-45 Female
4	Network Cable	Various	Various	RS-232	RJ-45 Male

## TUNER SETUP

No setup on the tuner is needed for this driver to work.

## g! CONFIGURATION

The installation process will involve loading a Generic Media Source driver from a downloaded file.

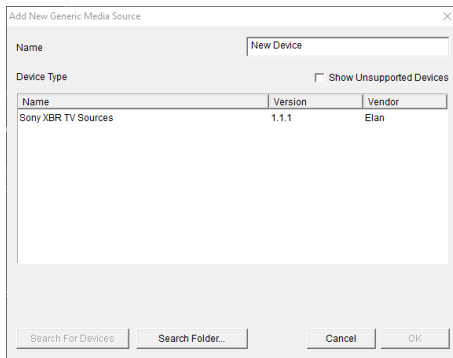
A communication device is needed for this driver – Generic Serial > Serial Port.

Note: All settings on the communication device will be auto populated when connected to the driver, with the exception of the serial port – select this from the drop down menu.

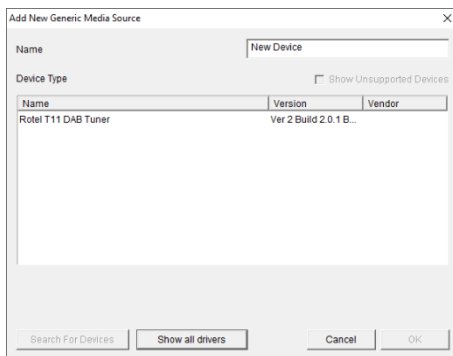
## INSTALLATION PROCESS

It is recommended that you follow the below installation process to ensure you are running the latest version of the driver.

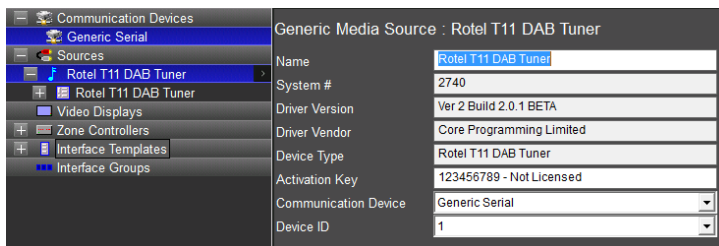
1. Download the latest version of the driver from the ELAN dealer support site or get it from your order confirmation email. If the file is zipped, then extract it to a known location.
2. Under the Media tab in configurator, right click sources and select Add New Generic Media Source.



3. On the next window use the Search Folder button to point Configurator to the location you saved the driver.



4. Select the driver and click OK.



5. The driver activation is covered in the next section.

6. Assign the driver to the communication device you installed earlier. Set the Device ID to 1.

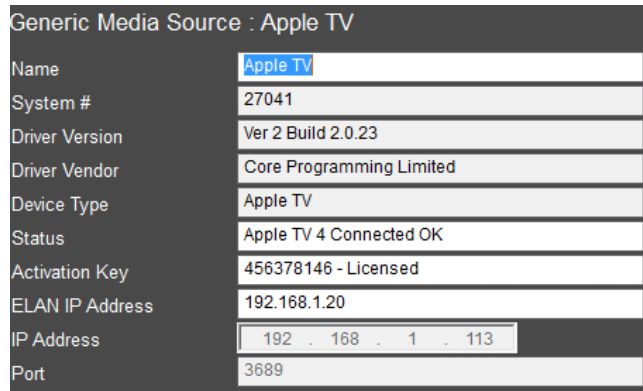
## DRIVER LICENSE

This driver requires a license key to function. Pricing and license keys can be obtained by visiting [www.intrinsicdev.co.uk](http://www.intrinsicdev.co.uk)

The controller MAC address is needed to generate a license key.

### INSTALLATION:

The license key is entered on the main properties page of the driver.

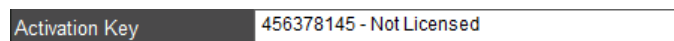


Generic Media Source : Apple TV	
Name	Apple TV
System #	27041
Driver Version	Ver 2 Build 2.0.23
Driver Vendor	Core Programming Limited
Device Type	Apple TV
Status	Apple TV 4 Connected OK
Activation Key	456378146 - Licensed
ELAN IP Address	192.168.1.20
IP Address	192 . 168 . 1 . 113
Port	3689

\*Example Image

Once you enter the product license key as shown above click “Apply” to save it and then within 20 seconds the driver will process the key.

After 20 seconds the driver will update the Activation Key window with the status of the license key. To see this update, you must refresh the screen by selecting another tab or device and then going back to this driver. You will either see, as above, that the driver is activated correctly or, as below, the driver is not activated.



Activation Key	456378145 - Not Licensed
----------------	--------------------------

Please check the status of the driver activation before logging a support ticket.



## COMMON MISTAKES

1. Not having the latest firmware installed, this driver **REQUIRES** at least ELAN FW 8.0.278.
2. Make sure the correct RJ45 to DB9 adaptor has been used.

## ELAN DEVELOPER PARTNER INFORMATION

This ELAN driver was written and supported by:



support@intrinsicdev.co.uk  
www.intrinsicdev.co.uk