

## Integration Note

Manufacturer:	Sky
Model Number(s):	<b>Sky+ HD Boxes – Tested with DRX890/895(W)</b> <b>Sky HD Multiroom boxes &amp; SkyQ boxes not currently Supported</b>
g! Core Module Version:	8.0.278
Driver Developer:	Core Programming Limited
Document Revision Date:	26/01/17

### Overview & Supported Features

This driver allows a g! system to communicate with a Sky+ HD via Ethernet.

**THE FOLLOWING OPTIONS ARE SUPPORTED BY THIS DRIVER:**

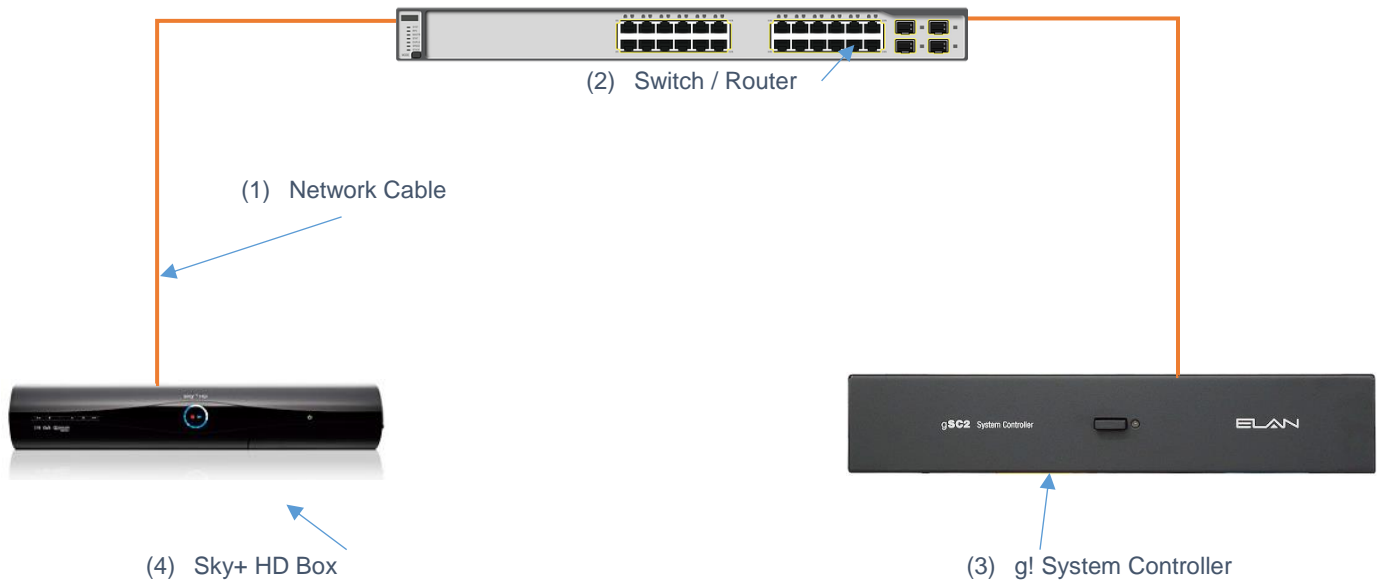
**Navigation & Transport control:** This driver supports the following commands:

Cursor Up, Down, Left & Right (inc press to scroll)  
Select & Backup (Exit on HR2/200)  
Rewind & Fast Forward  
Play/Pause Toggle  
Home and Menu  
Channel Up & Down  
Numbers  
All Sky+ HD Remote Control Buttons

Any feature not specifically noted as supported should be assumed to be unsupported.
--

## CONNECTION DIAGRAM: ETHERNET CONTROL

Refer to the Bill of Materials and Wiring Diagram that follow.



## BILL OF MATERIALS

#	Device	Manufacturer	Part Number	Protocol	Connector Type
1	Sky+ HD Box	Sky	Various	Ethernet	RJ-45 Female
2	g! Controller	ELAN	Various (e.g. SC2)	Ethernet	RJ-45 Female
3	Network Switch	Various	Various	Ethernet	RJ-45 Female
4	Network Cable	Various	Various	Ethernet	RJ-45 Male

## **SKY+ HD BOX SETUP**

### **Recommended Action : Static IP**

We recommend you assign a static IP to your player for all interfaces it supports (Wired and Wi-Fi).

### **Box Setup:**

No further setup is needed on the box. The driver after looks all handshaking.

## DRIVER LICENSE

This driver requires a license key to function. Pricing and license keys can be obtained by visiting [www.intrinsicdev.co.uk](http://www.intrinsicdev.co.uk)

The controller MAC address is needed to generate a license key.

### INSTALLATION:

The license key is entered on the main properties page of the driver.

Generic Media Source : Apple TV	
Name	Apple TV
System #	27041
Driver Version	Ver 2 Build 2.0.23
Driver Vendor	Core Programming Limited
Device Type	Apple TV
Status	Apple TV 4 Connected OK
Activation Key	456378146 - Licensed
ELAN IP Address	192.168.1.20
IP Address	192 . 168 . 1 . 113
Port	3689

\*Example Image

Once you enter the product license key as shown above click "Apply" to save it and then within 20 seconds the driver will process the key.

After 20 seconds the driver will update the Activation Key window with the status of the license key. To see this update, you must refresh the screen by selecting another tab or device and then going back to this driver. You will either see, as above, that the driver is activated correctly or, as below, the driver is not activated.

Activation Key	456378145 - Not Licensed
----------------	--------------------------

Please check the status of the driver activation before logging a support ticket.

## g! CONFIGURATION

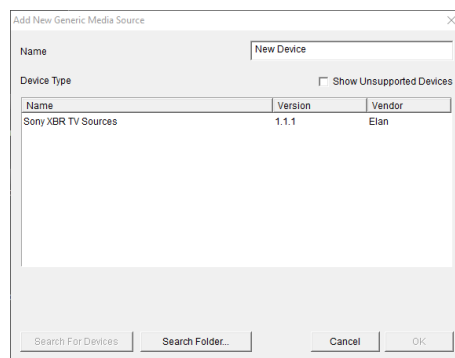
The installation process will involve loading a Generic Media Source driver from a downloaded file.

Note: No communication device is needed for this IP driver.

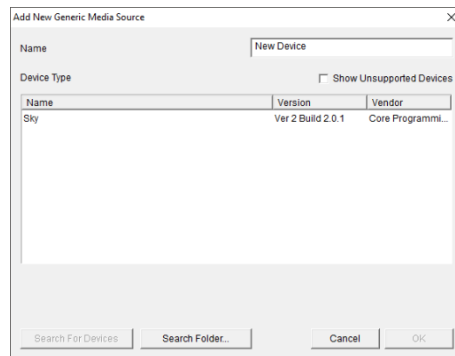
## INSTALLATION PROCESS

It is recommended that you follow the below installation process in order to ensure you are running the latest version of the driver.

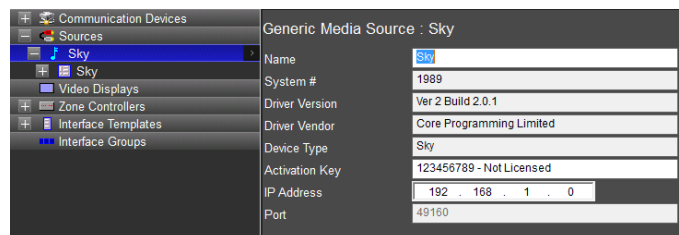
1. Download the latest version of the driver from the ELAN dealer support site or get it from your order confirmation email. If the file is zipped, then extract it to a known location.
2. Under the Media tab in configurator, right click sources and select Add New Generic Media Source.



3. On the next window use the Search Folder button to point Configurator to the location you saved the driver.



4. Select the driver and click OK.



5. Enter your license key and player IP address then click "Apply".

## g! CONFIGURATION DETAILS

The following table provides settings used in Configurator ...Please refer to the Configurator Reference Guide for more details.

In the table below:

- "<Select from list>"                      Select the appropriate item from drop down.
- "<User Defined>", etc.                      Type in the desired name for the item.
- "<Auto Detect>", etc.                      The system will auto detect this variable.

Devices	Variable Name	Settings (Ethernet)
Generic Media Source	Name	<User Defined> (Default <Auto Detect>)
	System #	<Auto Detect>
	Driver Version	<Auto Detect>
	Driver Vendor	Core Programming Limited
	Device Type	Sky+ HD
	Activation Key	<User Defined> (Enter key supplied by Intrinsic Dev)
	IP Address	<User Defined> (Enter static IP address of device)
	Port	<Auto Detect>

## COMMON MISTAKES

1. No communication device is needed.

## ELAN DEVELOPER PARTNER INFORMATION

This ELAN driver was written and supported by:



support@intrinsicdev.co.uk  
www.intrinsicdev.co.uk