

Integration Note

Manufacturer:	Sony
Model Number(s):	Android TVs 2015+
g! Core Module Version:	8.0.278
Driver Developer:	Core Programming Limited
Document Revision Date:	03/01/17

Overview & Supported Features

This driver allows a g! system to communicate with a Sony Android TV via Ethernet. The driver contains three parts:

Display Driver: This is installed as under video displays and can control the following functions of the TV:

- Power On/Off
- Source Selection
- Volume (inc Mute)

Source Driver: This is installed as a Generic Media Source under Sources and controls the following:

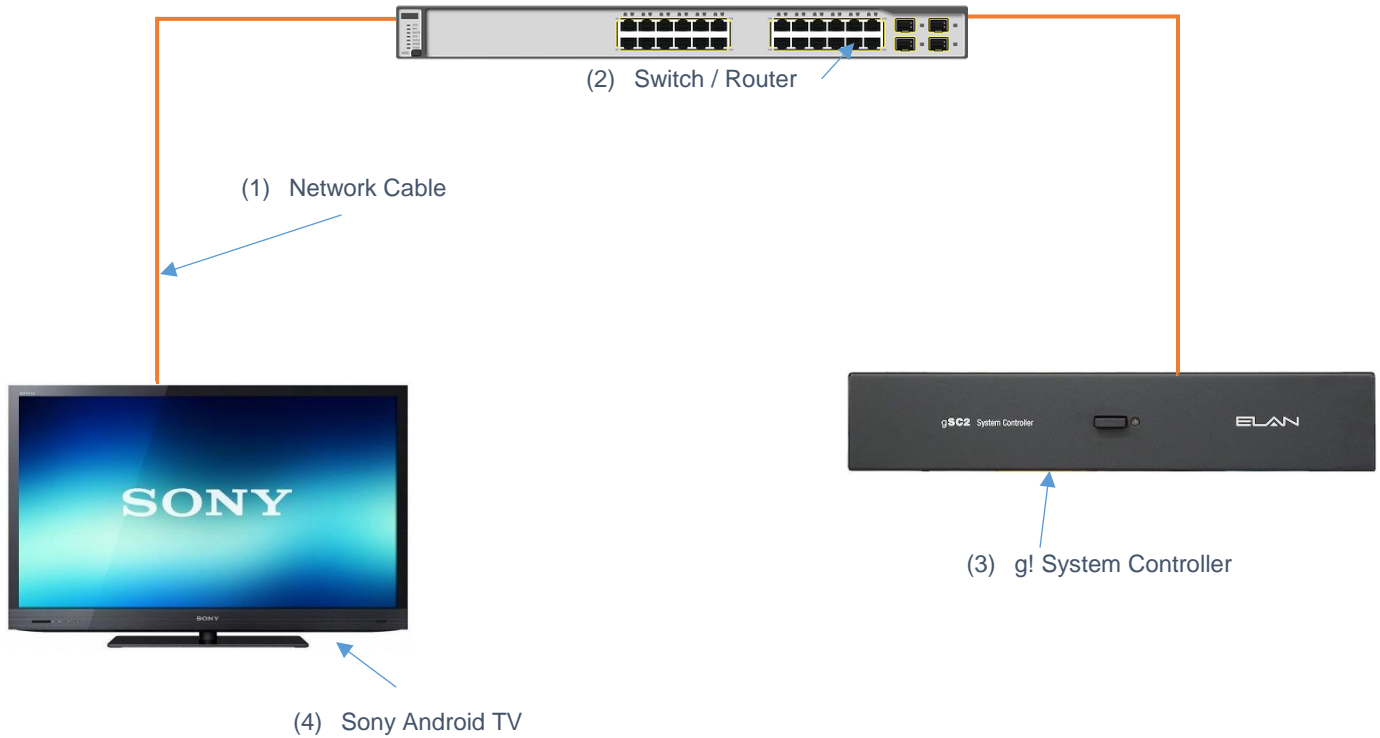
- Up, Down Left, Right (inc Press to Scroll)
- Navigation, Numbers and Transport Controls
- Direct Netflix Button

Zone Driver: This is installed under Zone Controllers. It has the same control as the display driver but it does it all as a zone controller. Example, when the zone controller is switched on the TV turns on, no need to pair in an additional TV driver to the zone. Depending on the installation having the TV appear as a Zone controller may be an advantage.

Any feature not specifically noted as supported should be assumed to be unsupported.

CONNECTION DIAGRAM: ETHERNET CONTROL

Refer to the Bill of Materials and Wiring Diagram that follow.



BILL OF MATERIALS

#	Device	Manufacturer	Part Number	Protocol	Connector Type
1	TV	Sony	Various	Ethernet	RJ-45 Female
2	g! Controller	ELAN	Various (e.g. SC2)	Ethernet	RJ-45 Female
3	Network Switch	Various	Various	Ethernet	RJ-45 Female
4	Network Cable	Various	Various	Ethernet	RJ-45 Male

SONY ANDROID TV SETUP

Recommended Action: Static IP

We recommend you assign a static IP to your player for all interfaces it supports (Wired and Wi-Fi).

Enable IP Control:

In order to control the TV with this driver Simple IP Control must be enabled in the below menu:

Network > Home Network Setup > IP Control > Simple IP Control

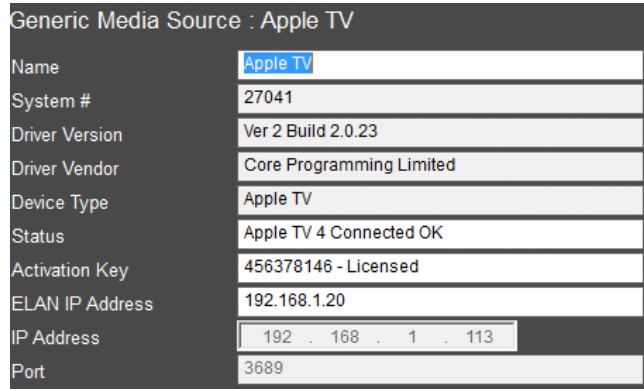
DRIVER LICENSE

This driver requires a license key to function. Pricing and license keys can be obtained by visiting www.intrinsicdev.co.uk

The controller MAC address is needed to generate a license key.

INSTALLATION:

The license key is entered on the main properties page of the driver.

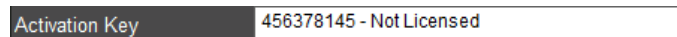


Generic Media Source : Apple TV	
Name	Apple TV
System #	27041
Driver Version	Ver 2 Build 2.0.23
Driver Vendor	Core Programming Limited
Device Type	Apple TV
Status	Apple TV 4 Connected OK
Activation Key	456378146 - Licensed
ELAN IP Address	192.168.1.20
IP Address	192 . 168 . 1 . 113
Port	3689

*Example Image

Once you enter the product license key as shown above click “Apply” to save it and then within 20 seconds the driver will process the key.

After 20 seconds the driver will update the Activation Key window with the status of the license key. To see this update, you must refresh the screen by selecting another tab or device and then going back to this driver. You will either see, as above, that the driver is activated correctly or, as below, the driver is not activated.



Activation Key	456378145 - Not Licensed
----------------	--------------------------

Please check the status of the driver activation before logging a support ticket.

g! CONFIGURATION

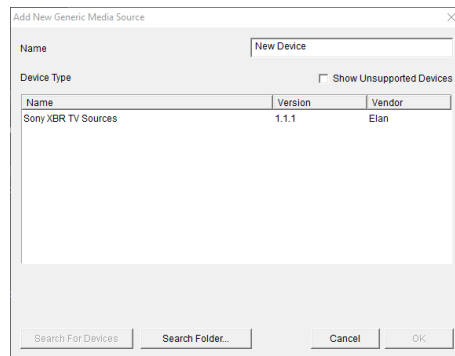
DISPLAY DRIVER

Note: No communication device is needed for this IP driver.

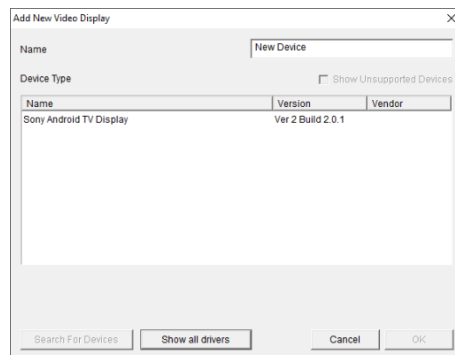
INSTALLATION PROCESS

It is recommended that you follow the below installation process in order to ensure you are running the latest version of the driver.

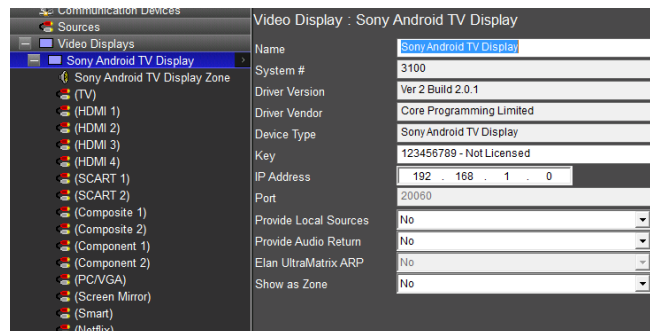
1. Download the latest version of the driver from the ELAN dealer support site or get it from your order confirmation email. If the file is zipped, then extract it to a known location.
2. Under the Media tab in configurator, right click Video Displays and select Add New Video Display.



3. On the next window use the Search Folder button to point Configurator to the location you saved the driver.



4. Select the driver and click OK.



5. Enter your license key and player IP address then click "Apply".

g! CONFIGURATION

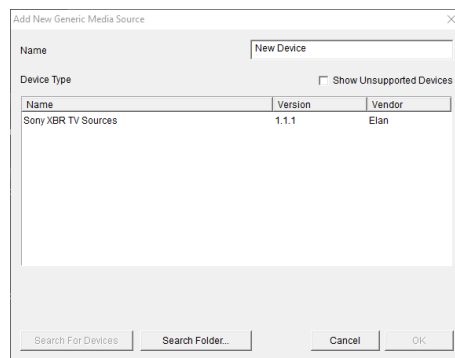
SOURCE DRIVER

Note: No communication device is needed for this IP driver.

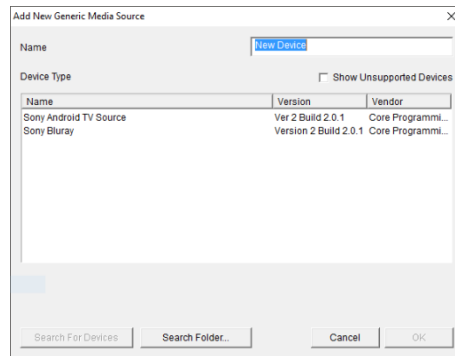
INSTALLATION PROCESS

It is recommended that you follow the below installation process in order to ensure you are running the latest version of the driver.

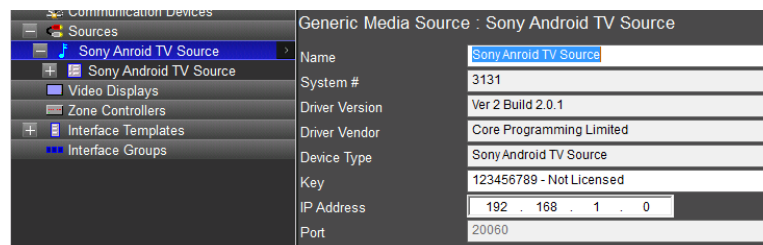
1. Download the latest version of the driver from the ELAN dealer support site or get it from your order confirmation email. If the file is zipped, then extract it to a known location.
2. Under the Media tab in configurator, right click sources and select Add New Generic Media Source.



3. On the next window use the Search Folder button to point Configurator to the location you saved the driver.



4. Select the driver and click OK.



5. Enter your license key and player IP address then click "Apply"

g! CONFIGURATION

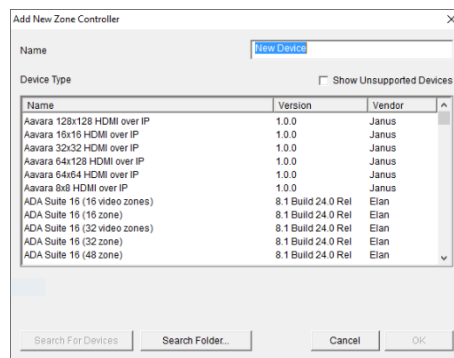
ZONE DRIVER

Note: No communication device is needed for this IP driver.

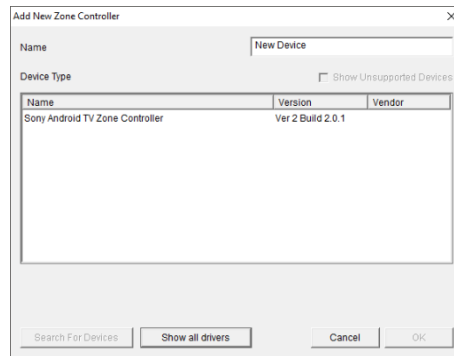
INSTALLATION PROCESS

It is recommended that you follow the below installation process in order to ensure you are running the latest version of the driver.

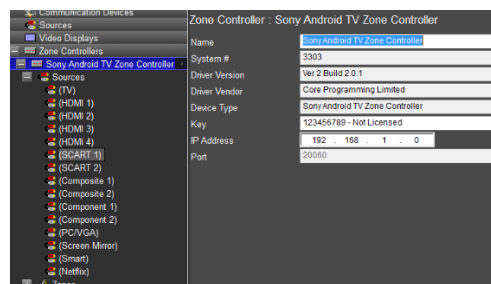
1. Download the latest version of the driver from the ELAN dealer support site or get it from your order confirmation email. If the file is zipped, then extract it to a known location.
2. Under the Media tab in configurator, right click Zone Controllers and select Add New Zone Controller.



3. On the next window use the Search Folder button to point Configurator to the location you saved the driver.



4. Select the driver and click OK.



5. Enter your license key and player IP address then click "Apply".

COMMON MISTAKES

1. No communication device is needed.

ELAN DEVELOPER PARTNER INFORMATION

This ELAN driver was written and supported by:



support@intrinsicdev.co.uk
www.intrinsicdev.co.uk