

Integration Note

Manufacturer:	HDAnywhere
Model Number(s):	mHub4K431, mHub4K862, mHub4K44PRO & mHub4K88PRO
g! Core Module Version:	8.0.295
Driver Developer:	Core Programming Limited
Document Revision Date:	01/04/2017

Overview & Supported Features

This driver allows a g! system to communicate with a HDAnywhere video matrix via Ethernet.

THE FOLLOWING OPTIONS ARE SUPPORTED BY THIS DRIVER:

Matrix Source Selection: The g! Viewer interface, zone slaving, or Event Maps can be used to select sources by zone from the g! system. Feedback is provided to keep the g! Viewer in sync with any changes made via IR or from the front panel. Any input may be sent to any output.

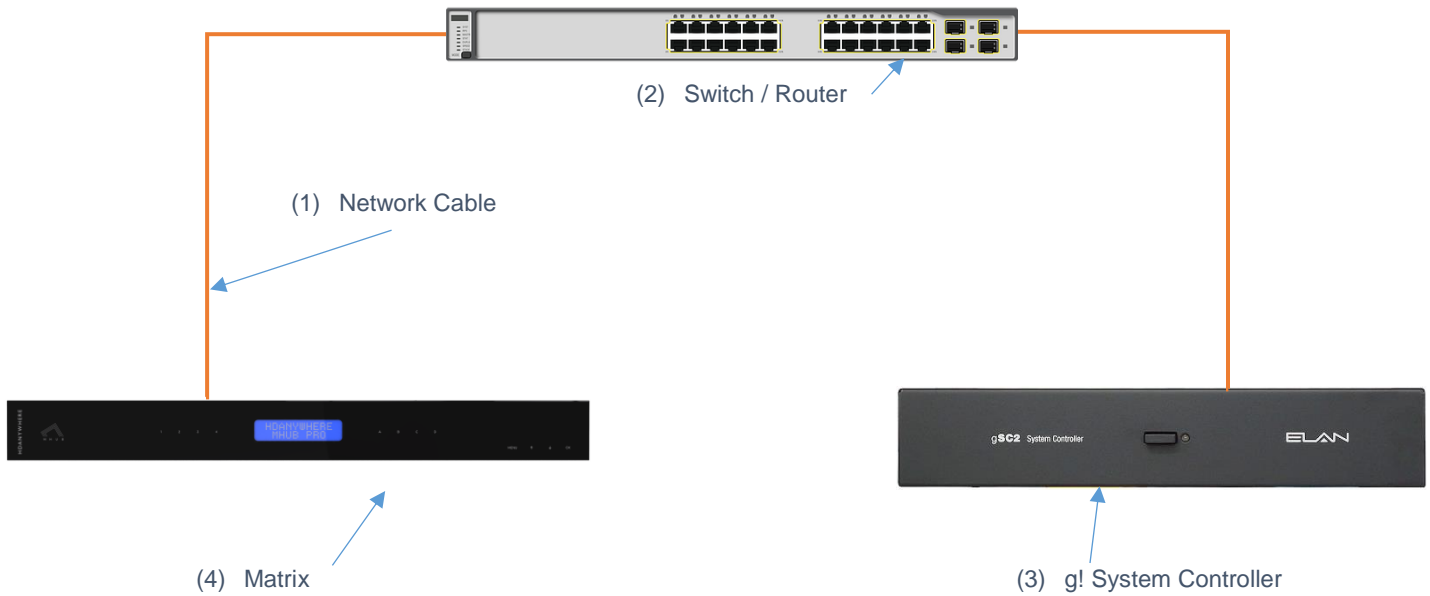
Special 4K431 & 4K862 Functions:

EDID info and HDBaseT Connection status are available in the zone custom settings page.

Any feature not specifically noted as supported should be assumed to be unsupported.
--

CONNECTION DIAGRAM: ETHERNET CONTROL

Refer to the Bill of Materials and Wiring Diagram that follow.



BILL OF MATERIALS

#	Device	Manufacturer	Part Number	Protocol	Connector Type
1	mHub Matrix	HDAnywhere	Various	Ethernet	RJ-45 Female
2	g! Controller	ELAN	Various (e.g. SC2)	Ethernet	RJ-45 Female
3	Network Switch	Various	Various	Ethernet	RJ-45 Female
4	Network Cable	Various	Various	Ethernet	RJ-45 Male

HDANYWHERE SETUP

The HDAnywhere matrix should be installed with cat5/6 cabling back to the g! Controller, or network switch for communications.

ETHERNET CONFIGURATION

It is necessary to configure a static IP address on your HDAnywhere matrix to allow for reliable communication with the g! Controller. This address must be in the same range as the g! Controller.

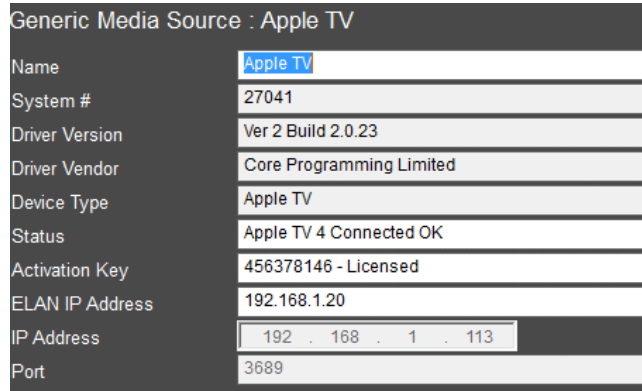
DRIVER LICENSE

This driver requires a license key to function. Pricing and license keys can be obtained by visiting www.intrinsicdev.co.uk

The controller MAC address is needed to generate a license key.

INSTALLATION:

The license key is entered on the main properties page of the driver.

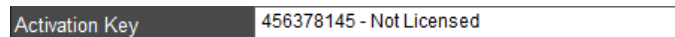


Generic Media Source : Apple TV	
Name	Apple TV
System #	27041
Driver Version	Ver 2 Build 2.0.23
Driver Vendor	Core Programming Limited
Device Type	Apple TV
Status	Apple TV 4 Connected OK
Activation Key	456378146 - Licensed
ELAN IP Address	192.168.1.20
IP Address	192 . 168 . 1 . 113
Port	3689

*Example Image

Once you enter the product license key as shown above click “Apply” to save it and then within 20 seconds the driver will process the key.

After 20 seconds the driver will update the Activation Key window with the status of the license key. To see this update, you must refresh the screen by selecting another tab or device and then going back to this driver. You will either see, as above, that the driver is activated correctly or, as below, the driver is not activated.



Activation Key	456378145 - Not Licensed
----------------	--------------------------

Please check the status of the driver activation before logging a support ticket.

g! CONFIGURATION

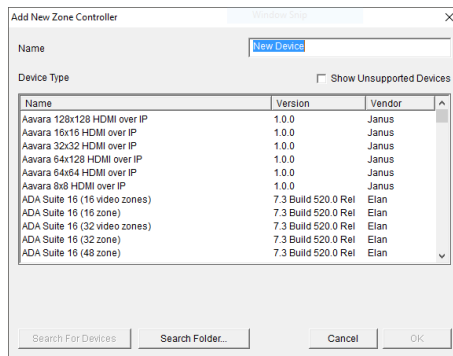
The installation process will involve loading a Zone Controller driver from a downloaded file.

Note: No communication device is needed for this IP driver.

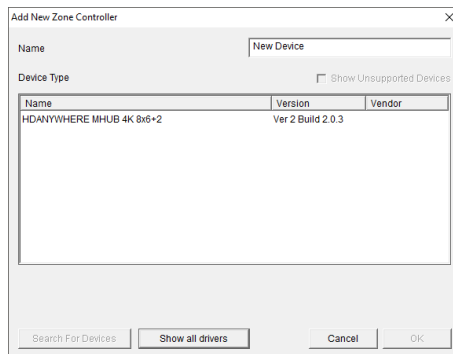
INSTALLATION PROCESS

It is recommended that you follow the below installation process in order to ensure you are running the latest version of the driver.

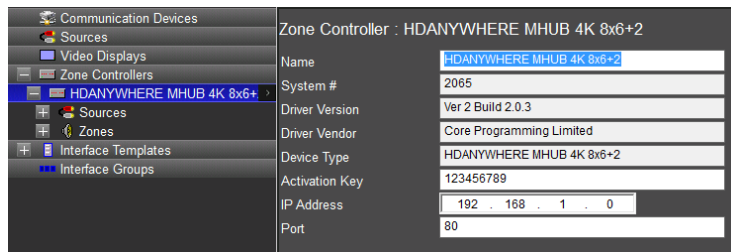
1. Download the latest version of the driver from the ELAN dealer support site.
2. Under the Media tab in configurator, add a new zone controller.



3. On the next window use the Search Folder button to point Configurator to the location you saved the driver.



4. Select the driver and click OK.



5. Enter your license key and matrix IP address then click apply.

g! CONFIGURATION DETAILS

The following table provides settings used in Configurator ... Please refer to the Configurator Reference Guide for more details.

In the table below:

- "<Select from list>" Select the appropriate item from drop down.
- "<User Defined>", etc. Type in the desired name for the item.
- "<Auto Detect>", etc. The system will auto detect this variable.

Devices	Variable Name	Settings (Ethernet)
Zone Controller	Name	<User Defined> (Default <Auto Detect>)
	System #	<Auto Detect>
	Driver Version	<Auto Detect>
	Driver Vendor	Intrinsic Dev
	Device Type	HDAnywhere (Matrix Type)
	Activation Key	<User Defined> (Enter key supplied by Intrinsic Dev)
	IP Address	<User Defined> (Enter static IP address of matrix)
	Port	<Auto Detect>
	Sources	System #
Source Device		<Select from list>
Display Icon		<Select from list>
Source Volume		<Auto Detect>
Display Name		<User Defined> (Default <Auto Detect>)
Zones	Name	<User Defined> (Default <Auto Detect>)
	System #	<Auto Detect>
	Universal Receiver	<Select from list>
	Display 1	<Select from list>
	Display 2	<Select from list>
	Slave Zone 1	<Select from list>
	Slave Zone 2	<Select from list>
	Turn On Source	<Select from list>
	Hide Volume	<Select from list>
	Matrix Only	<Select from list>
	Audio Return Input	<Select from list>

COMMON MISTAKES

1. Matrix may need to be rebooted after changing the IP address.
2. No communication device is needed.

ELAN DEVELOPER PARTNER INFORMATION

This ELAN driver was written and supported by:



support@intrinsicdev.co.uk
www.intrinsicdev.co.uk