

Integration Note

Manufacturer:	Pakedge
Model Number(s):	PowerPak PE-08I
g! Core Module Version:	8.1.401
Driver Developer:	Intrinsic Dev, part of Intrinsic Group Limited
Document Revision Date:	27/07/2017

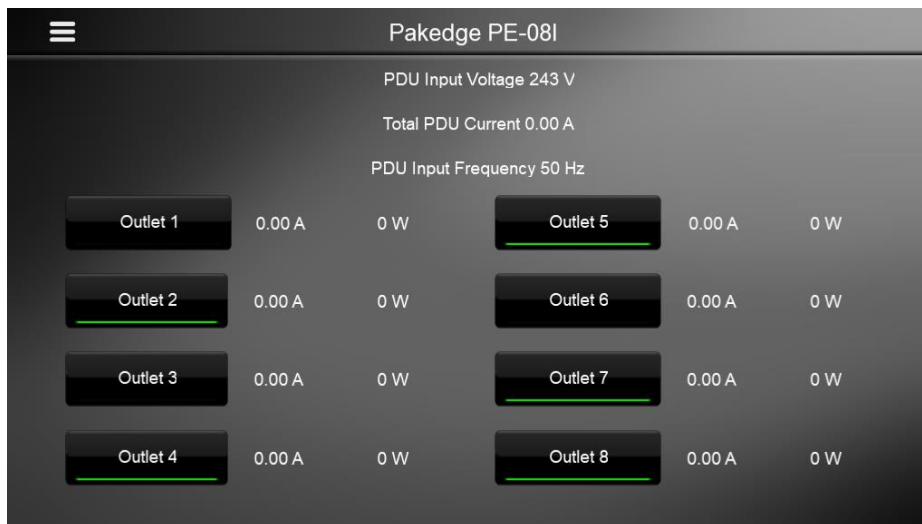
Overview & Supported Features

This driver allows an ELAN g! system to communicate with a Pakedge PowerPak PE-08I via Ethernet to provide control over managed outlets and power usage figures.

THE FOLLOWING OPTIONS ARE SUPPORTED BY THIS DRIVER:

Outlet Control: Each of the units 8 outlets can be individually controlled and their current status displayed in the viewer.

Power Usage: Power usage figures for each of the outputs can be display in the viewer.



Continued Dealer Support

Intrinsic Group's offer free licenses for showrooms and dealer's own homes – just drop us a support ticket. All of our drivers are backed up by our online ticketing system.

Any feature not specifically noted as supported should be assumed to be unsupported.

Disclaimer

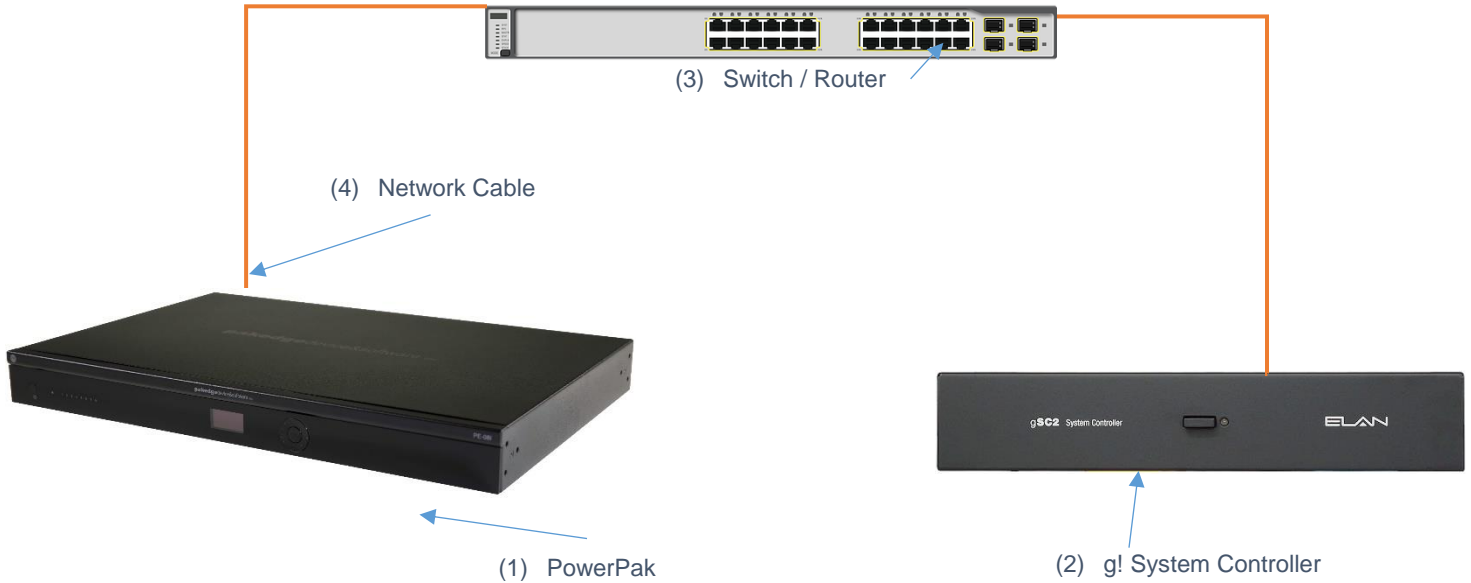
Intrinsic Group's drivers are created to the highest standard, developed with industry leading practices, including bench and real world field testing.

Intrinsic Group advise that dealers take advantage of our free show room driver to thoroughly test and familiarize themselves with our drivers and their capabilities before installing on a customer site.

Intrinsic Group offer dedicated support to help dealers, though Intrinsic Group Limited accept no liability for any loss, delays, damage or otherwise, whether resulting from the use of their drivers or otherwise. Drivers are provided without warranty with respect to the product they are controlling. Intrinsic Group do not guarantee the continuous functionality should the product manufacture implement a change to their product. We constantly update our drivers to improve functionality and remove any bugs that may arise, with updates being provided at no costs for the listed, supported models in this integration note. Major updates of product may lead to the need to purchase versions of drivers.

CONNECTION DIAGRAM: ETHERNET CONTROL

Refer to the Bill of Materials and Wiring Diagram that follow.



BILL OF MATERIALS

#	Device	Manufacturer	Part Number	Protocol	Connector Type
1	Managed PDU	Packedge	PE-08I	Ethernet	RJ-45 Female
2	g! Controller	ELAN	Various (e.g. SC2)	Ethernet	RJ-45 Female
3	Network Switch	Various	Various	Ethernet	RJ-45 Female
4	Network Cable	Various	Various	Ethernet	RJ-45 Male

PAKEDGE POWERPAK SETUP

Set up your device according to the manufacturer's instructions.

A static IP address is required.

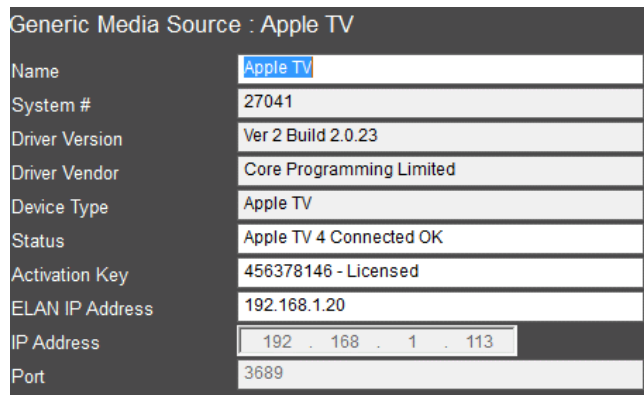
DRIVER LICENSE

This driver requires a license key to function. Pricing and license keys can be obtained by visiting www.intrinsicdev.co.uk

The ELAN controller MAC address is needed to generate a license key. Your MAC address is your system name less "SC" or "g1". If you are in doubt, a free MAC address finder tool is available from our website.

INSTALLATION:

The license key is entered on the main properties page of the driver.

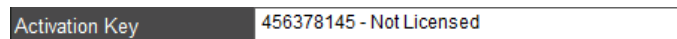


Generic Media Source : Apple TV	
Name	Apple TV
System #	27041
Driver Version	Ver 2 Build 2.0.23
Driver Vendor	Core Programming Limited
Device Type	Apple TV
Status	Apple TV 4 Connected OK
Activation Key	456378146 - Licensed
ELAN IP Address	192.168.1.20
IP Address	192 . 168 . 1 . 113
Port	3689

*Example Image

Once you enter the product license key as shown above click "Apply" to save it and then within 20 seconds the driver will process the key.

After 20 seconds the driver will update the Activation Key window with the status of the license key. To see this update, you must refresh the screen by selecting another tab or device and then going back to this driver. You will either see, as above, that the driver is activated correctly or, as below, the driver is not activated.



Activation Key	456378145 - Not Licensed
----------------	--------------------------

Please check the status of the driver activation before logging a support ticket.

g! CONFIGURATION

The installation process will involve loading a Lighting Interface driver from a downloaded file.

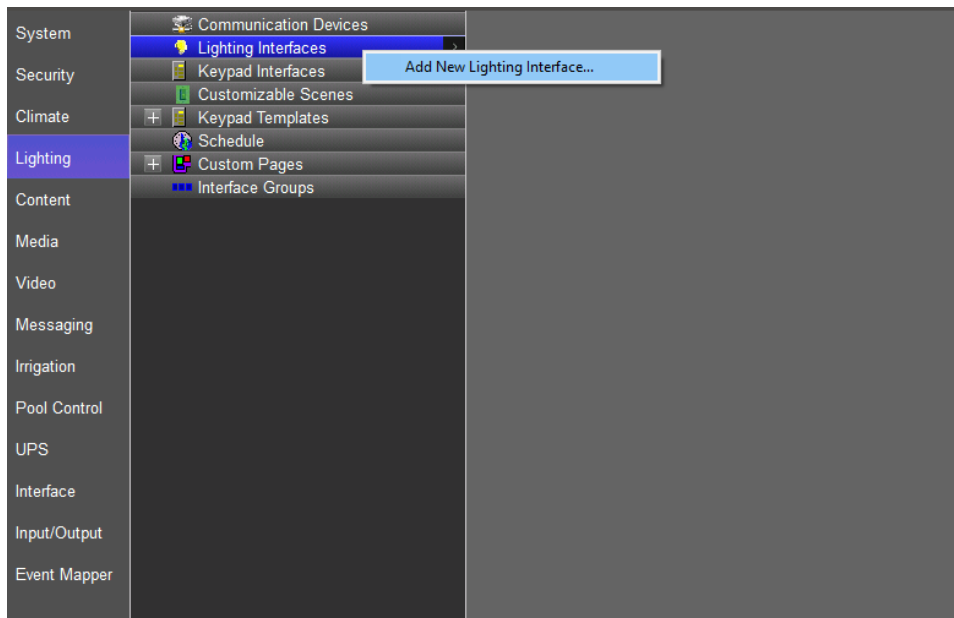
Note: No communication device is needed for this IP driver.

Note: Due to the two way feedback from this device it was not possible to build this driver as a relay module, only a lighting controller was capable of supporting all the features needed.

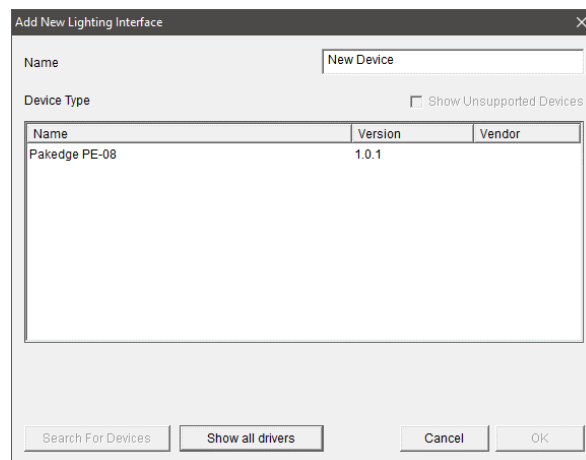
INSTALLATION PROCESS

It is recommended that you follow the below installation process in order to ensure you are running the latest version of the driver.

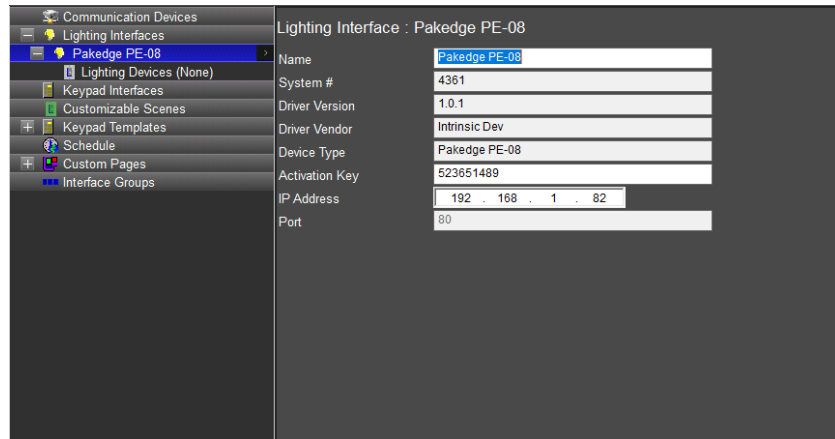
1. Download the latest version of the driver from the Intrinsic Dev website.
2. Under the Lighting tab in configurator, add a new Lighting Interface.



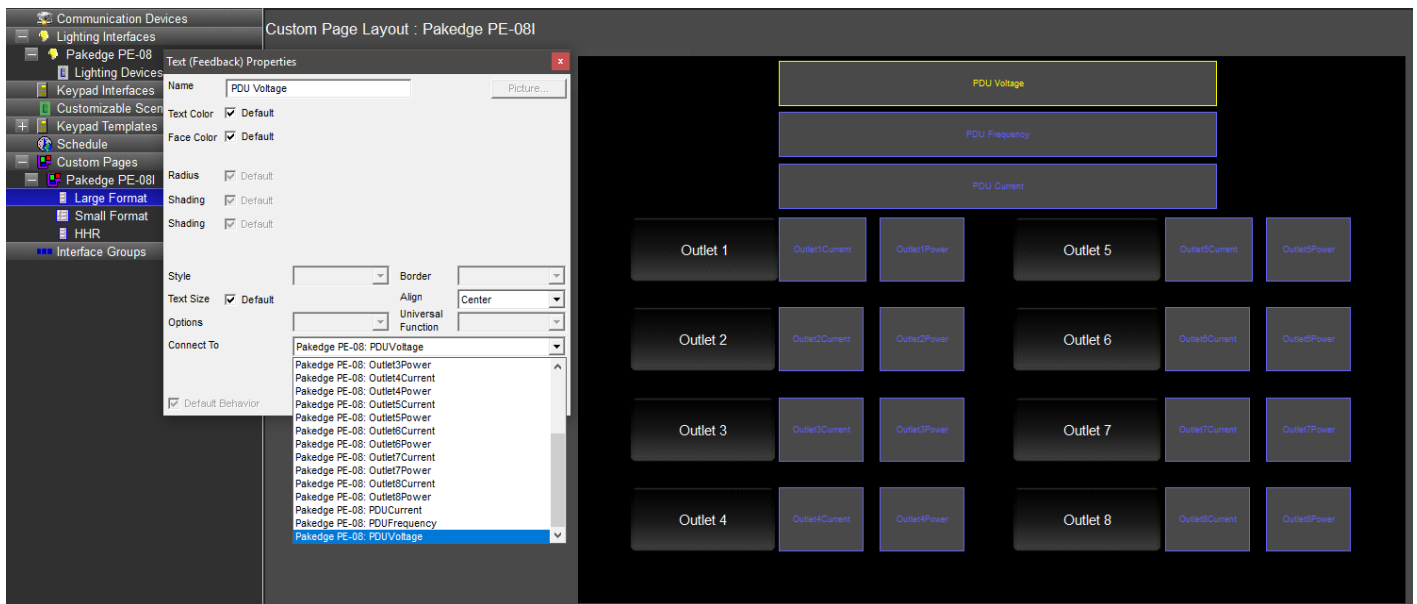
3. On the next window use the Search Folder button to point Configurator to the location you saved the driver.



4. Select the driver and click OK.
5. Enter your license key and Device IP address then click apply.



6. It may take up to 30 seconds for the outlet circuits to auto populate and become controllable.
7. Once setup the outlets are controllable as lighting circuits.
8. A sample custom page layout is provided to demonstrate what feedback is possible from the PDU.



9. Once added to ELAN each field will need connected to the correct feedback variable. The fields have been labeled to match the variable they need connected to.
10. Alternatively, dealers can make their own custom pages and use the data in a way that best suits their project.

COMMON MISTAKES

1. Incorrect IP address entered
2. No communication device is needed.

ELAN DEVELOPER PARTNER INFORMATION

This ELAN driver was written and supported by:



support@intrinsicdev.co.uk
www.intrinsicdev.co.uk