

Integration Note

Manufacturer:	Roku
Model Number(s):	All IP Controllable Roku Media Players
Crestron Processor Version:	Tested on 3 Series Processors, support for other versions not guaranteed
Driver Developer:	Intrinsic Dev, part of Intrinsic Group Limited
Document Revision Date:	23/09/2017

Overview & Supported Features

Intrinsic Group Limited's Roku module replicates the Roku remote and allows a Crestron Processor to communicate with Roku via Ethernet (IP), thus eliminating the need for unreliable IR control.

- IP control of Amazon Fire TV
- Automatic maintaining of TCP connection
- Transport Controls
- Keyboard
- Direct App Launching
- Menu Buttons
- Power Status

THE FOLLOWING OPTIONS ARE SUPPORTED BY THIS DRIVER:

Navigation & Transport control: This driver supports the following commands:

Cursor Up, Down, Left & Right (inc press to scroll)
Select & Cancel
Rewind & Fast Forward
Play/Pause Toggle
Home and Menu

App Favourites (Icons and Launching): The driver will automatically and dynamically discover favourite apps (channels) set by the user. It will output the address (URL) to load artwork for the user's favourite apps. It also outputs the name, and enables the programmer to set up quick launch buttons.

Keyboard: A-Z, Period, @, &, ', 0-9, Backspace, Space

Continued Dealer Support

Intrinsic Group's offer free licenses for showrooms and dealer's own homes – just drop us a support ticket. All of our drivers are backed up by our online ticketing system.

Any feature not specifically noted as supported should be assumed to be unsupported.
--

Disclaimer

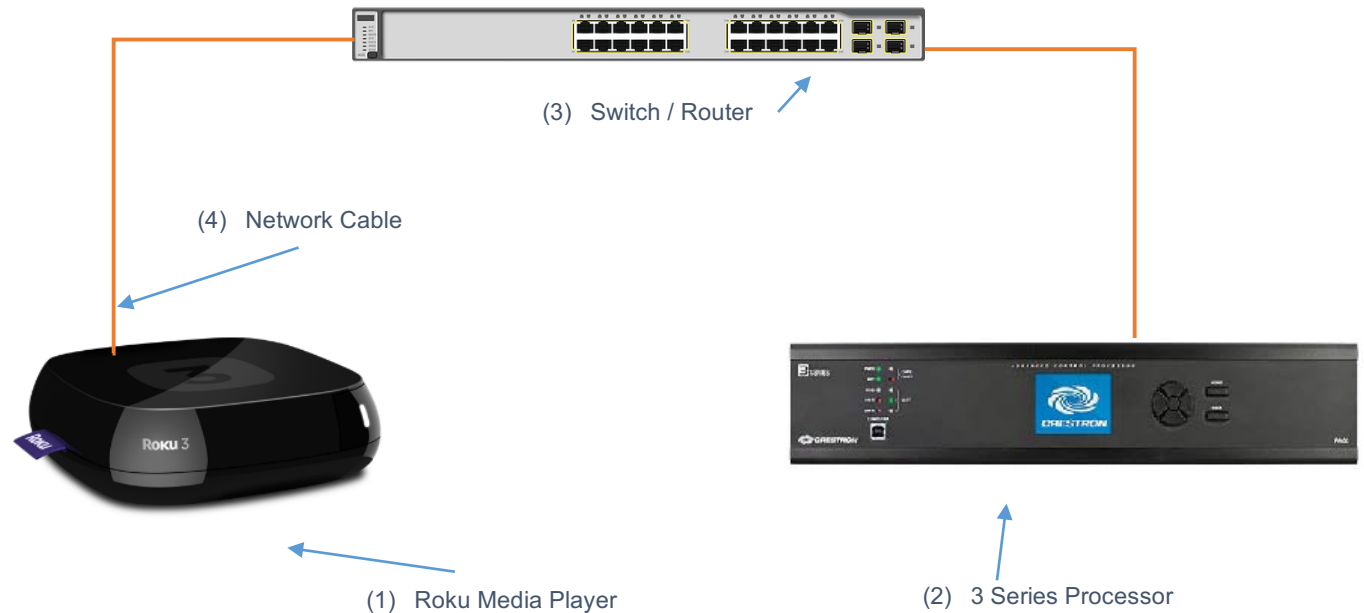
Intrinsic Group's drivers are created to the highest standard, developed with industry leading practices, including bench and real world field testing.

Intrinsic Group Limited advise that dealers take advantage of our free show room driver to thoroughly test and familiarise themselves with our drivers and their capabilities before installing on a customer site.

Intrinsic Group offer dedicated support to help dealers, though Intrinsic Group Limited accept no liability for any loss, delays, damage or otherwise, whether resulting from the use of their drivers or otherwise. Drivers are provided without warranty with respect to the product they are controlling. Intrinsic Group do not guarantee the continuous functionality should the product manufacture implement a change to their product. We constantly update our drivers to improve functionality and remove any bugs that may arise, with updates being provided at no costs for the listed, supported models in this integration note. Major updates of product may lead to the need to purchase versions of drivers.

CONNECTION DIAGRAM: ETHERNET CONTROL

Refer to the Bill of Materials and Wiring Diagram that follow.



BILL OF MATERIALS

#	Device	Manufacturer	Part Number	Protocol	Connector Type
1	Media Player	Roku	Various	Ethernet	RJ-45 Female
2	3 Series Processor	Crestron	Various (e.g. RMC3, CP3)	Ethernet	RJ-45 Female
3	Network Switch	Various	Various	Ethernet	RJ-45 Female
4	Network Cable	Various	Various	Ethernet	RJ-45 Male

ROKU MEDIA PLAYER SETUP

Recommended Action : Static IP

We recommend you assign a static IP to your player for all interfaces it supports (Wired and Wifi).

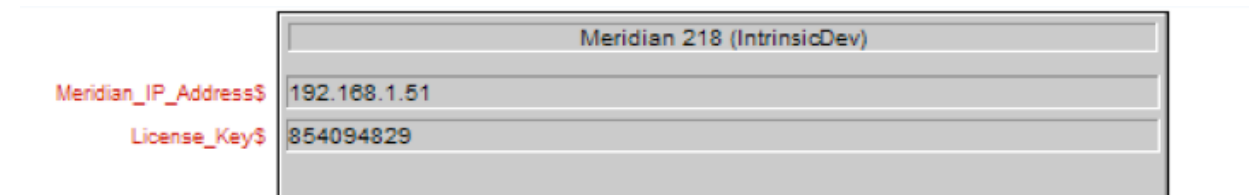
DRIVER LICENSE

This driver requires a license key to function. Pricing and license keys can be obtained by visiting www.intrinsicdev.co.uk . License keys are issued on a per processor basis. You only need a single license key for multiple installations on the same processor.

The Crestron controller MAC address is needed to generate a license key. If you are in doubt, a free MAC address finder tool is available from our website.

INSTALLATION:

The license key is entered on the top of the module in the License_Key\$ parameter field.



Meridian 218 (IntrinsicDev)	
Meridian_IP_Address\$	192.168.1.51
License_Key\$	854094829

*Example Image

Licensing takes place automatically, after you have uploaded your Simpl Windows program to the processor.

Please check that you have correctly entered your processor's MAC on the website and the license key you received before logging a support ticket.

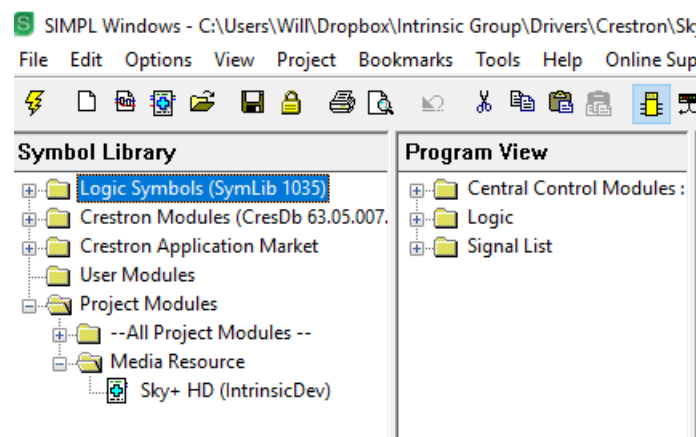
Simpl Windows CONFIGURATION

The installation process will involve loading a SIMPL+ Module into your SIMPL Windows file. To do this you will need to place the downloaded files either in the folder containing your project file (smw) or in your SIMPL Windows installation's User SIMP+ folder to make it appear in all programs.

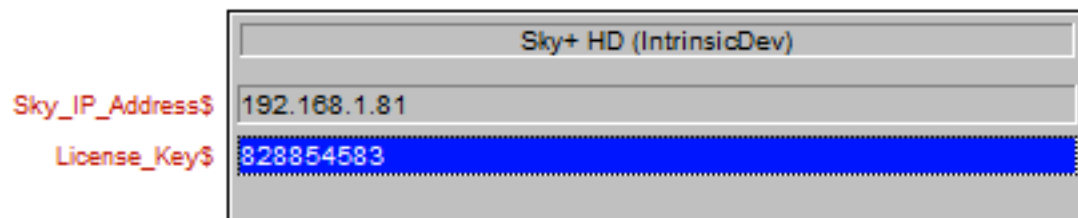
Each Roku Media Player requires a different instance of the Roku Media Player within the program, however, you only need to purchase one license per controller – the same license key works throughout.

INSTALLATION PROCESS

1. Download the latest version of the driver from the Intrinsic Dev website.
2. Copy the download files to the folder containing your project file (smw) or in your SIMPL Windows installation's User SIMP+ folder to make it appear in all programs.
3. Select the Module which will be listed as a Media Resource

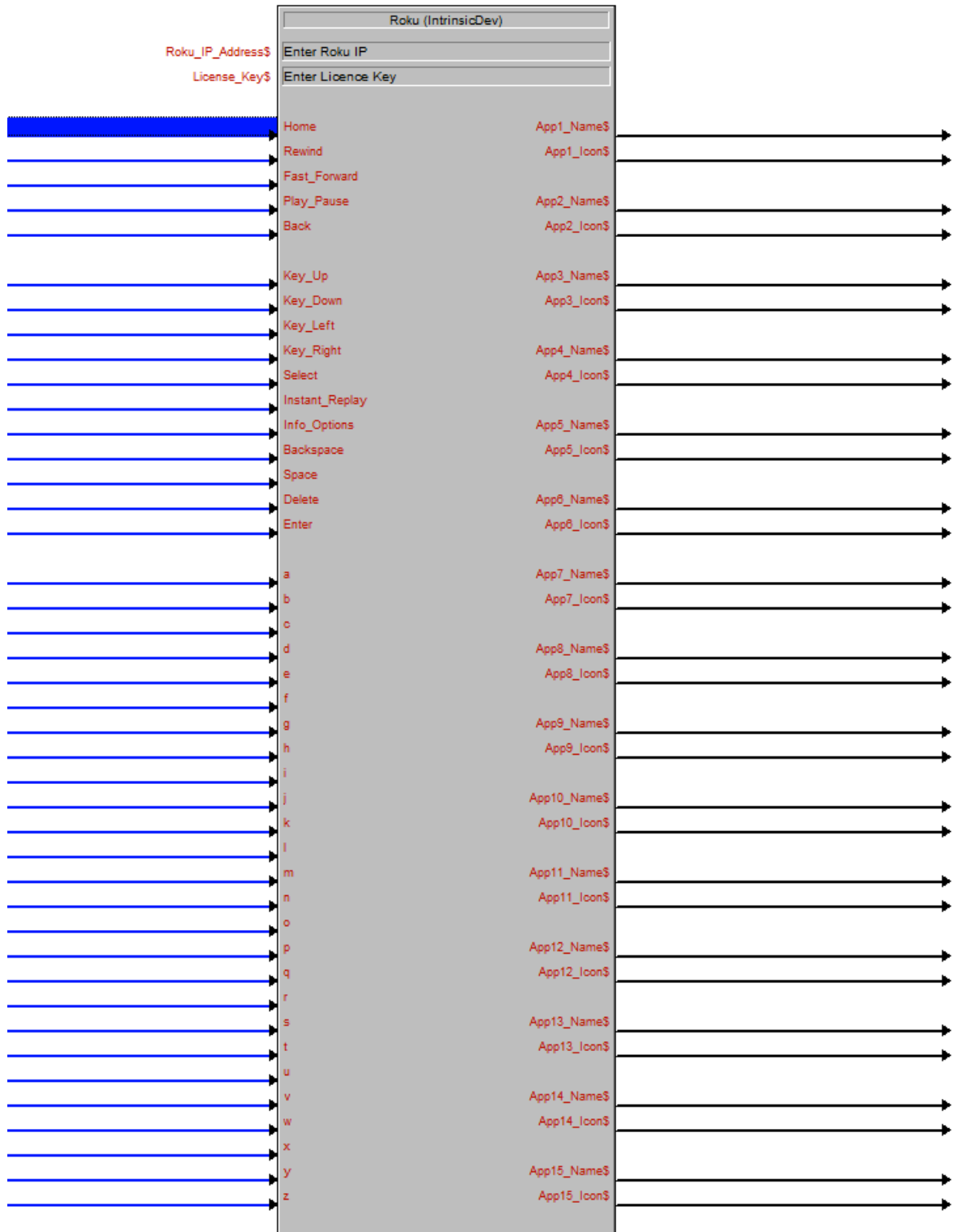


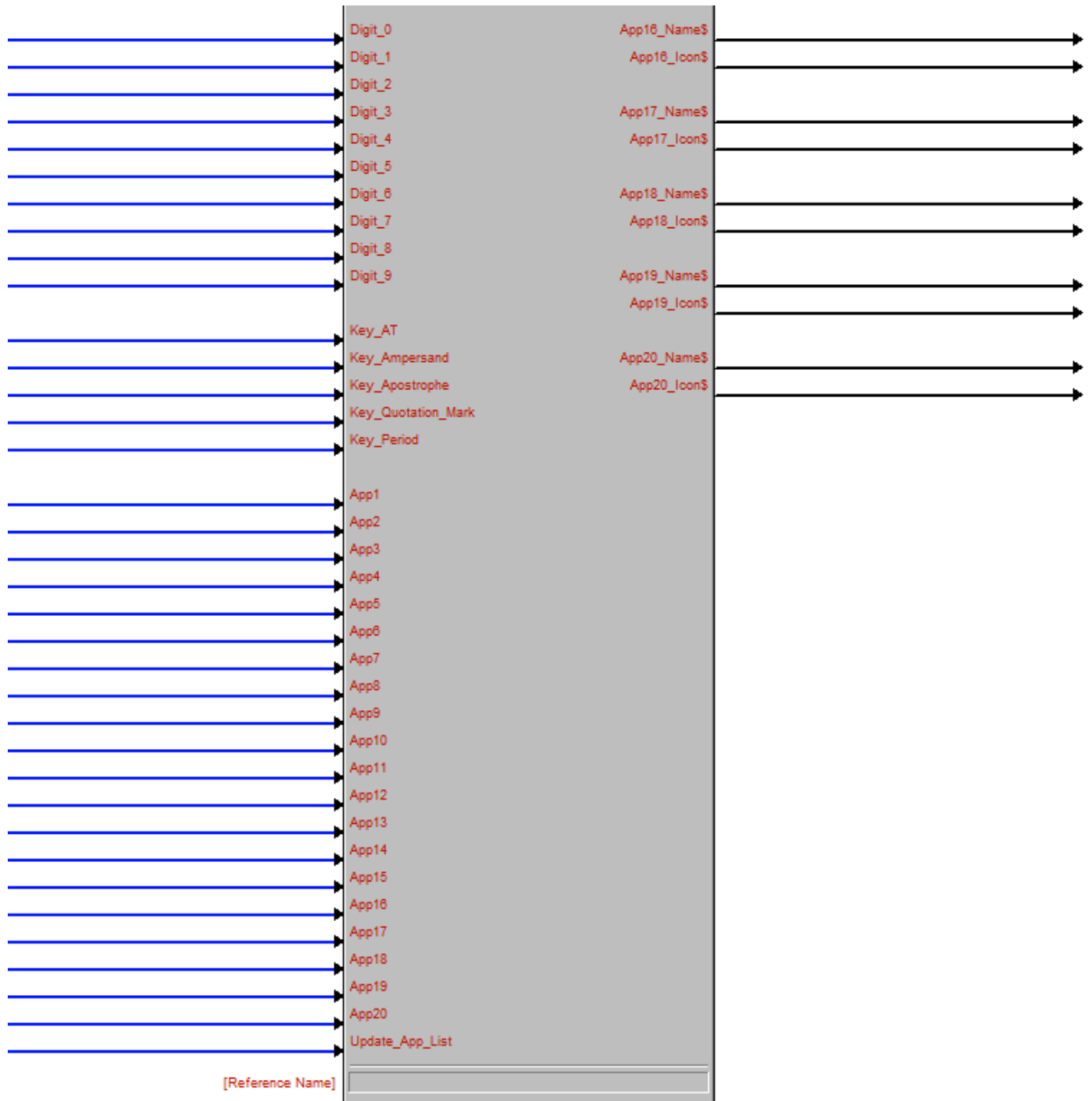
4. Enter the IP Address of the Roku Player in the appropriately labelled parameter field. Once complete enter the license key in the relevant box



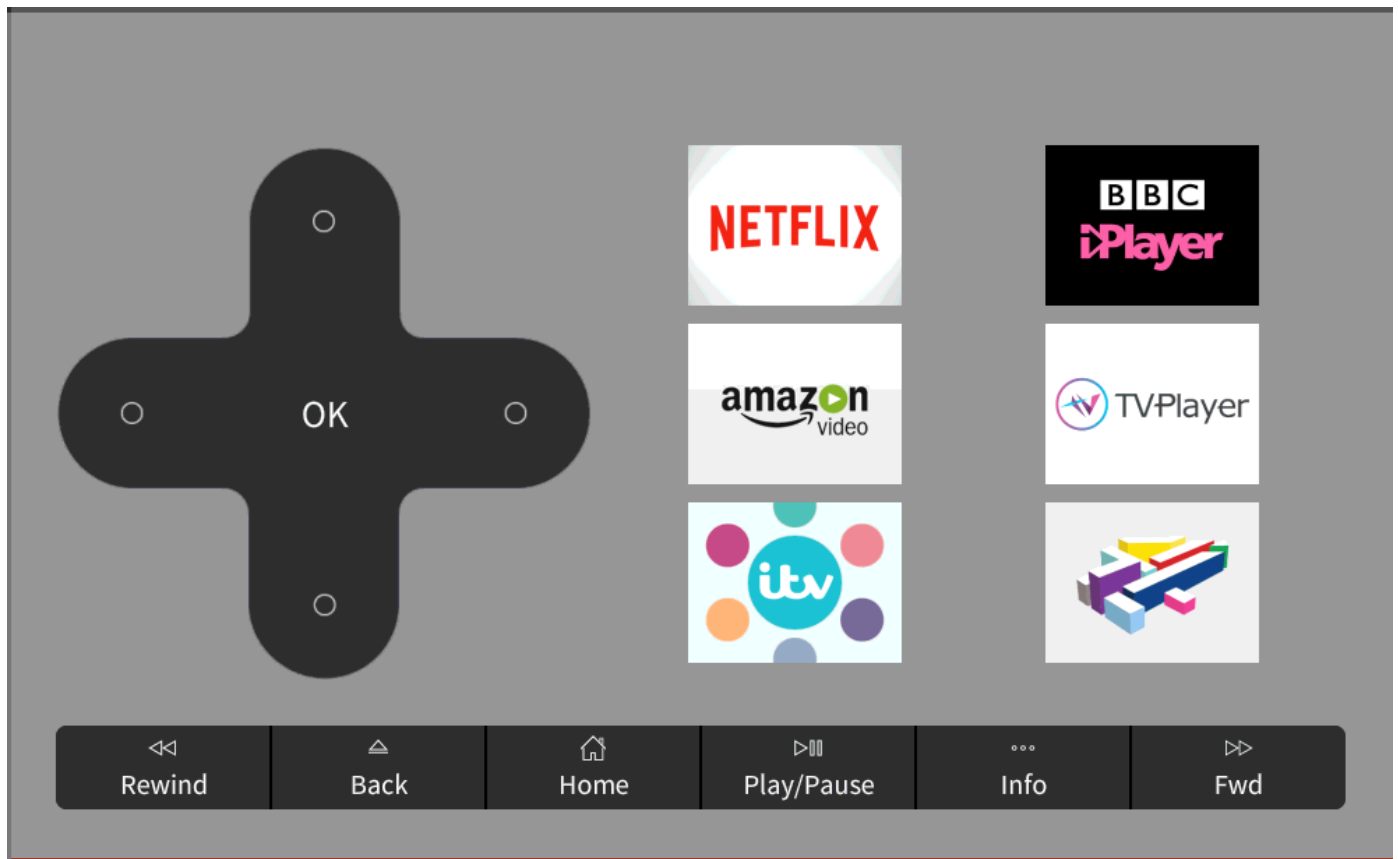
5. Complete your programming as required. When any of the signals is driven high, the module functions in the same way as the Roku remote control and so transmits the corresponding command to the Roku Media Player that you are controlling. Where keys should repeat, such as navigation, channel up/channel down, the driver automatically handles repeat presses for as long as the signal is driven high
6. Compile and upload your completed program to your processor.

CONFIGURATION DETAILS





Example Showing Dynamically Loaded Apps on an interface:



Apps icons will automatically update to reflect user changes (programmer sets update interval).
Each app icon functions as a quick launch button.

COMMON MISTAKES

1. Driver doesn't license - Incorrect IP address entered for Crestron Processor or incorrect license key entered
2. No control – your driver is not licensed (check debug) or the IP Address of your Roku Media Player is incorrect
3. Failing to properly assign a static IP address or DHCP reservation

This module is written and supported by:



support@intrinsicdev.co.uk
www.intrinsicdev.co.uk