

Integration Note

Manufacturer:	Sonos
Model Number(s):	Sonos All Models (tested up to v8.2)
Crestron Processor Version:	Minimum 3 Series Processor
Driver Developer:	Intrinsic Dev, part of Intrinsic Group Limited
Document Revision Date:	24/11/2017

Overview & Supported Features

Intrinsic Group Limited's Sonos Simple Select Driver is designed to provide some useful features that fall outside of the standard feature set of the official Crestron Sonos Driver.

THE FOLLOWING OPTIONS ARE SUPPORTED BY THIS DRIVER:

This driver supports the following commands:

Aux In Selection: Ability to select aux in the Sonos Player

Remote Aux In: Ability to stream from the aux in on a remote Sonos Player

Optical In Selection: Triggering of Optical in on Sonos Playbar/Playbase

Optical In Varying Delay: Ability to vary the delay time before optical in is triggered

Continued Dealer Support

Intrinsic Group's offer free licenses for showrooms and dealer's own homes – just drop us a support ticket.

All of our drivers are backed up by our online ticketing system.

Any feature not specifically noted as supported should be assumed to be unsupported.
--

Disclaimer

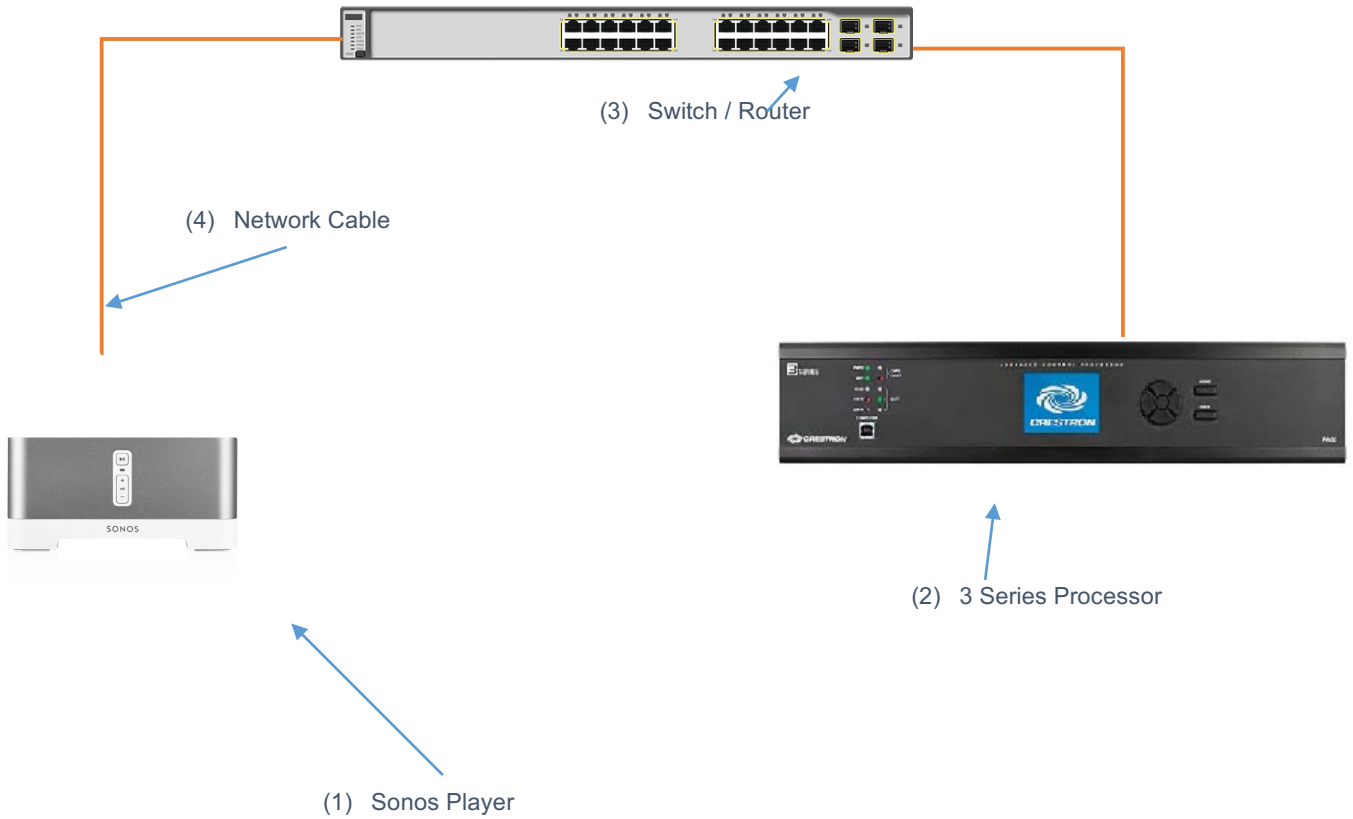
Intrinsic Group's drivers are created to the highest standard, developed with industry leading practices, including bench and real world field testing.

Intrinsic Group Limited advise that dealers take advantage of our free show room driver to thoroughly test and familiarise themselves with our drivers and their capabilities before installing on a customer site.

Intrinsic Group offer dedicated support to help dealers, though Intrinsic Group Limited accept no liability for any loss, delays, damage or otherwise, whether resulting from the use of their drivers or otherwise. Drivers are provided without warranty with respect to the product they are controlling. Intrinsic Group do not guarantee the continuous functionality should the product manufacture implement a change to their product. We constantly update our drivers to improve functionality and remove any bugs that may arise, with updates being provided at no costs for the listed, supported models in this integration note. Major updates of product may lead to the need to purchase versions of drivers.

CONNECTION DIAGRAM: ETHERNET CONTROL

Refer to the Bill of Materials and Wiring Diagram that follow.



BILL OF MATERIALS

#	Device	Manufacturer	Part Number	Protocol	Connector Type
1	Sonos Player	Sonos	Various	Ethernet	RJ-45 Female
2	3 Series Processor	Crestron	Various (e.g. RMC3, CP3)	Ethernet	RJ-45 Female
3	Network Switch	Various	Various	Ethernet	RJ-45 Female
4	Network Cable	Various	Various	Ethernet	RJ-45 Male

SONOS SETUP

Recommended Action: DHCP Lease

We recommend you assign a DHCP lease to your Sonos Player for all interfaces it supports (Wired and Wi-Fi). Doing this ensures the Sonos will work properly even if the unit is reset to factory defaults.

Disable WiFi:

If you are using Sonos hardwired to your network, then it is highly recommended that you disable the built-in Wi-Fi. Otherwise the Sonos player will still attempt to use the Wi-Fi link to other players for communication and audio streaming.

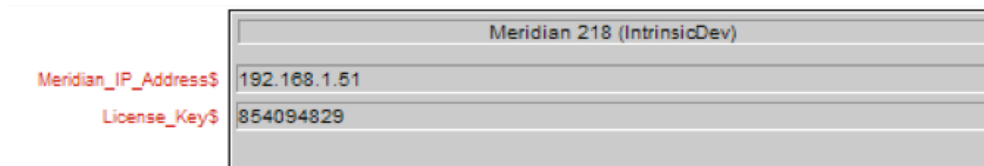
DRIVER LICENSE

This driver requires a license key to function. Pricing and license keys can be obtained by visiting www.intrinsicdev.co.uk . License keys are issued on a per processor basis. You only need a single license key for multiple installations on the same processor.

The Crestron controller MAC address is needed to generate a license key. If you are in doubt, a free MAC address finder tool is available from our website.

INSTALLATION:

The license key is entered on the top of the module in the License_Key\$ parameter field.



*Example Image

Licensing takes place automatically, after you have uploaded your Simpl Windows program to the processor.

Please check that you have correctly entered your processor's MAC on the website and the license key you received before logging a support ticket.

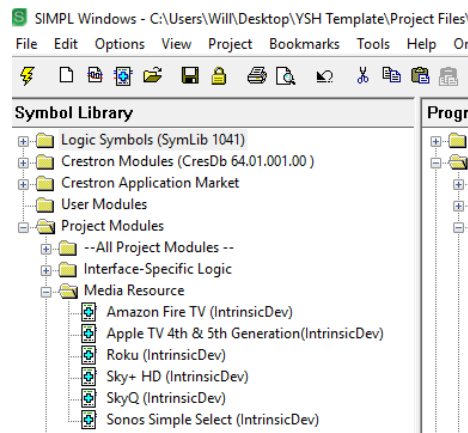
Simpl Windows CONFIGURATION

The installation process will involve loading a SIMPL+ Module into your SIMPL Windows file. To do this you will need to place the downloaded files either in the folder containing your project file (smw) or in you SIMPL Windows installation's User SIMP+ folder to make it appear in all programs.

Each Amazon Fire TV requires a different instance of the Amazon Fire TV (Intrinsic Dev) Module within the program, however, you only need to purchase on license per controller – the same license key works throughout.

INSTALLATION PROCESS

1. Download the latest version of the driver from the Intrinsic Dev website.
2. Copy the download files to the folder containing your project file (smw) or in you SIMPL Windows installation's User SIMP+ folder to make it appear in all programs.
3. Select the Module which will be listed as a Media Resource



4. Enter the IP Address of the Sonos Player you want to control in the appropriately labelled parameter field. Next enter the MAC address of the Sonos Player that has the AUX in you wish to stream through the player you are controlling. If you want to use the AUX IN on that player, then enter the MAC address of that player. If you want to use the AUX IN of another player, then enter its MAC address. Once complete enter the license key in this relevant box

	Sonos Simple Select (IntrinsicDev)
Sonos_IP_Address\$	192.168.1.52
Sonos_MAC_Address\$	B8:E9:37:40:EA:FF
License_Key\$	731649819

5. Select the type of Sonos Player you are wanting to control.

Sonos_Type\$	Playbar/base
PlayBar_Delay	5 Seconds

6. If you are controlling a Playbar/Playbase and are wanting to trigger switching to the OPTICAL input on the Playbar/Playbase, the Sonos system is designed to only latch on to this if the OPTICAL input is live. On some (normally older TVs) we have seen this take up to 8 seconds to activate. You will therefore need to delay the switching using the

drop down. Our test rig uses a 2016 Samsung Smart TV (IP driver in development), and we have found that with the Playbase, a 3 second delay suffices for all situations (including TV on from cold).

- When you need to switch from the main Sonos stream to the AUX/Optical input, simply set the Aux_In signal to high. Each time the internal player is used, this signal needs to be driven high to re-trigger the selection of the AUX/OPTICAL IN when need.



- In addition to the Simple Select, our **Sonos Pro Driver** is also available (from December 2017) which provides pseudo audio matrix functionality, coupled with all the above features, the ability to enable/disable wifi, bass, treble, loudness, voice enhancer & night mode.

CONFIGURATION DETAILS

Sonos Simple Select (IntrinsicDev)	
Sonos_IP_Address\$	192.168.1.52
Sonos_MAC_Address\$	B8:E9:37:40:EA:FF
License_Key\$	731649819
Sonos_Type\$	Playbar/base
PlayBar_Delay	5 Seconds
Use_Aux/Optical_Input	Select_Aux
[Reference Name]	

COMMON MISTAKES

1. Driver doesn't license - incorrect license key entered (usually the wrong MAC entered at checkout)
2. No control – your driver is not licensed (check debug) or the IP Address of your Sonos Player is incorrect (we frequently receive tickets with users who are mistakenly controlling the wrong Sonos Player. Remember you can get a list of IP addresses from the Sonos App > About My Sonos System).
3. Failing to properly assign a DHCP reservation
4. No control – incorrect MAC address entered (it should look like the example and not include the additional digits shown in the Sonos app!)

This Crestron module was written and supported by:



support@intrinsicdev.co.uk
www.intrinsicdev.co.uk