

Integration Note

Manufacturer:	Apple
Model Number(s):	4 th & 5 th Generation Apple TV
Crestron Processor Version:	Minimum 3 Series Processor
Driver Developer:	Intrinsic Dev, part of Intrinsic Group Limited
Document Revision Date:	30/11/2017

Overview & Supported Features

Intrinsic Group Limited's Apple TV Module enables the communication with an Apple TV via Ethernet.

THE FOLLOWING OPTIONS ARE SUPPORTED BY THIS DRIVER:

This driver supports the following commands:

Navigation & Transport control:

This driver supports the following commands:

Cursor Up, Down, Left & Right (inc press to scroll)
Select & Cancel
Rewind & Fast Forward
Play/Pause Toggle
Home and Menu
Stop

Meta Data:

Current Artwork
Title
Total Time
Time Remaining
Current Position

Continued Dealer Support

Intrinsic Group's offer free licenses for showrooms and dealer's own homes – just drop us a support ticket. All of our drivers are backed up by our online ticketing system.

Any feature not specifically noted as supported should be assumed to be unsupported.

Disclaimer

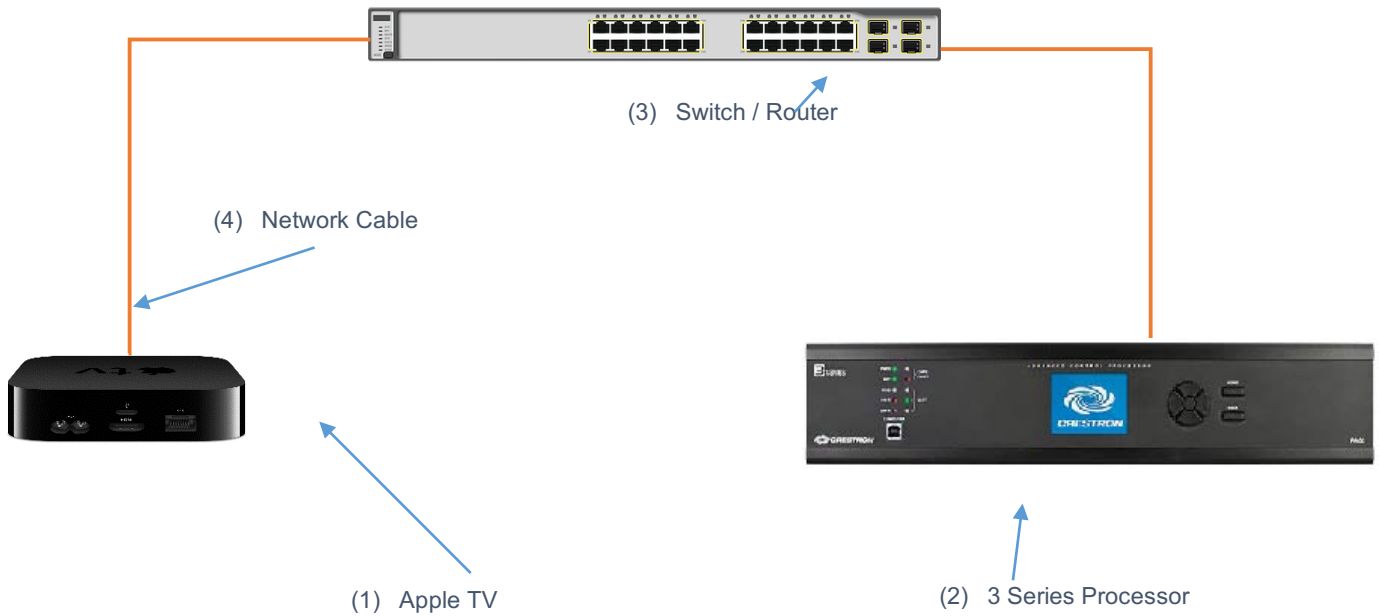
Intrinsic Group's drivers are created to the highest standard, developed with industry leading practices, including bench and real world field testing.

Intrinsic Group Limited advise that dealers take advantage of our free show room driver to thoroughly test and familiarise themselves with our drivers and their capabilities before installing on a customer site.

Intrinsic Group offer dedicated support to help dealers, though Intrinsic Group Limited accept no liability for any loss, delays, damage or otherwise, whether resulting from the use of their drivers or otherwise. Drivers are provided without warranty with respect to the product they are controlling. Intrinsic Group do not guarantee the continuous functionality should the product manufacture implement a change to their product. We constantly update our drivers to improve functionality and remove any bugs that may arise, with updates being provided at no costs for the listed, supported models in this integration note. Major updates of product may lead to the need to purchase versions of drivers.

CONNECTION DIAGRAM: ETHERNET CONTROL

Refer to the Bill of Materials and Wiring Diagram that follow.



BILL OF MATERIALS

#	Device	Manufacturer	Part Number	Protocol	Connector Type
1	Apple TV	Apple	4 th or 5 th Gen	Ethernet	RJ-45 Female
2	3 Series Processor	Crestron	Various (e.g. RMC3, CP3)	Ethernet	RJ-45 Female
3	Network Switch	Various	Various	Ethernet	RJ-45 Female
4	Network Cable	Various	Various	Ethernet	RJ-45 Male

SONOS SETUP

Recommended Action: Static IP

We recommend you assign a static IP to your Apple TV for all interfaces it supports (Wired and Wifi).

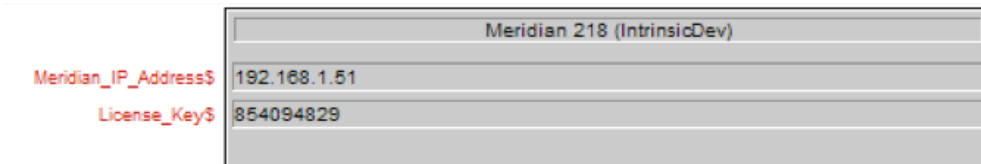
DRIVER LICENSE

This driver requires a license key to function. Pricing and license keys can be obtained by visiting www.intrinsicdev.co.uk. License keys are issued on a per processor basis. You only need a single license key for multiple installations on the same processor.

The Crestron controller MAC address is needed to generate a license key. If you are in doubt, a free MAC address finder tool is available from our website.

INSTALLATION:

The license key is entered on the top of the module in the License_Key\$ parameter field.



*Example Image

Licensing takes place automatically, after you have uploaded your Simpl Windows program to the processor.

Please check that you have correctly entered your processor's MAC on the website and the license key you received before logging a support ticket.

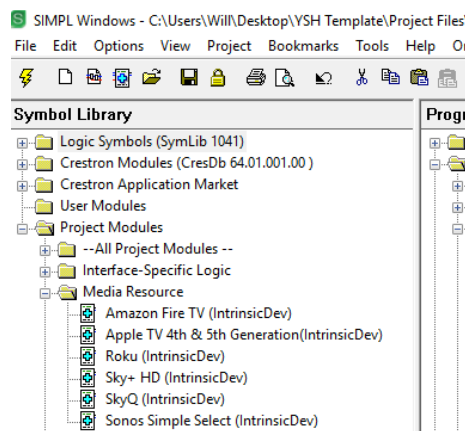
Simpl Windows CONFIGURATION

The installation process will involve loading a SIMPL+ Module into your SIMPL Windows file. To do this you will need to place the downloaded files either in the folder containing your project file (smw) or in you SIMPL Windows installation's User SIMP+ folder to make it appear in all programs.

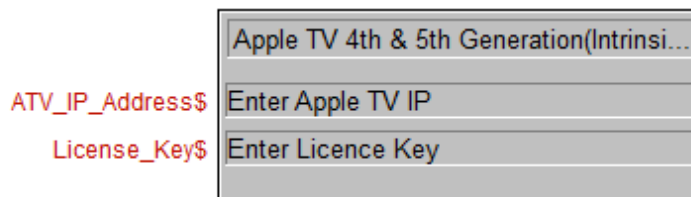
Each Amazon Fire TV requires a different instance of the Amazon Fire TV (Intrinsic Dev) Module within the program, however, you only need to purchase on license per controller – the same license key works throughout.

INSTALLATION PROCESS

1. Download the latest version of the driver from the Intrinsic Dev website.
2. Copy the download files to the folder containing your project file (smw) or in you SIMPL Windows installation's User SIMP+ folder to make it appear in all programs.
3. Select the Module which will be listed as a Media Resource



4. Enter the IP Address of the Apple TV you want to control in the appropriately labelled parameter field. Once complete enter the license key in this relevant box



5. Link the signals into your program.
6. Complete the pairing procedure below:

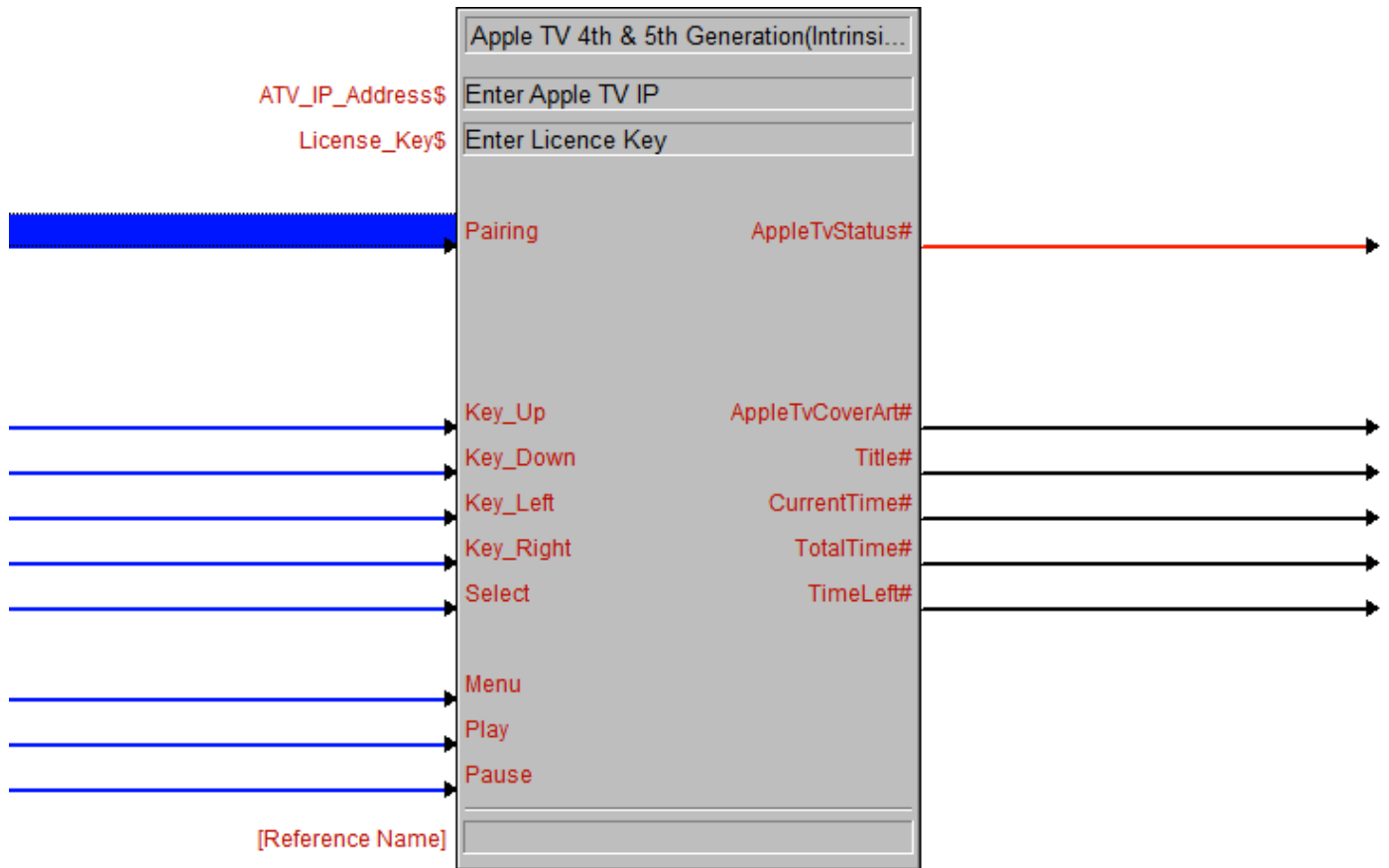
DRIVER PAIRING:

1. Setup the Apple TV with a static IP address and ensure it is running the latest firmware.
2. Go to the pairing menu on the Apple TV:
ATV4 is settings > remotes & devices > remote app
3. Drive the Pairing signal high in Toolbox
4. On the Apple TV you should see "CRES-xx-xx", xx xx being the last four digits of your controller MAC address.

5. Select and click this line, you will be prompted for a passcode, enter 3526 and confirm.
6. At this point the driver will update the IP address for the Apple TV and the Apple TV will show a paired remote called "IntrinsicDev - Crestron".

NB. If you need to change the IP address of the Apple TV you will need to remove the driver and pair it again

CONFIGURATION DETAILS



COMMON MISTAKES

1. Driver doesn't license - incorrect license key entered (usually the wrong MAC entered at checkout)
2. No control – your driver is not licensed (check debug) or incorrect IP address entered.
3. No control – IP address

This Crestron module was written and supported by:



support@intrinsicdev.co.uk
www.intrinsicdev.co.uk