

Integration Note

Manufacturer:	Sony
Model Number(s):	Blu-ray Players with network control 2017+
g! Core Module Version:	8.2.212
Driver Developer:	Intrinsic Group Limited
Document Revision Date:	03/01/2017

Supported Models (Basic Control):

UBP-X800, UBP-X1000
BDP-S3700, BDP-S6700

****BDP-S1700 Firmware varies by region. Please test before installation. Also may not support Wake On Lan.**

Overview & Supported Features

This driver allows a g! system to communicate with a Sony Blu-ray via Ethernet.

THE FOLLOWING OPTIONS ARE SUPPORTED BY THIS DRIVER:

Navigation & Transport control: This driver supports the following commands:

Cursor Up, Down, Left & Right (inc press to scroll)
Transport and optional controls
Direct Netflix Link
Wake On LAN to start player
Direct App launching

Any feature not specifically noted as supported should be assumed to be unsupported.
--

Disclaimer

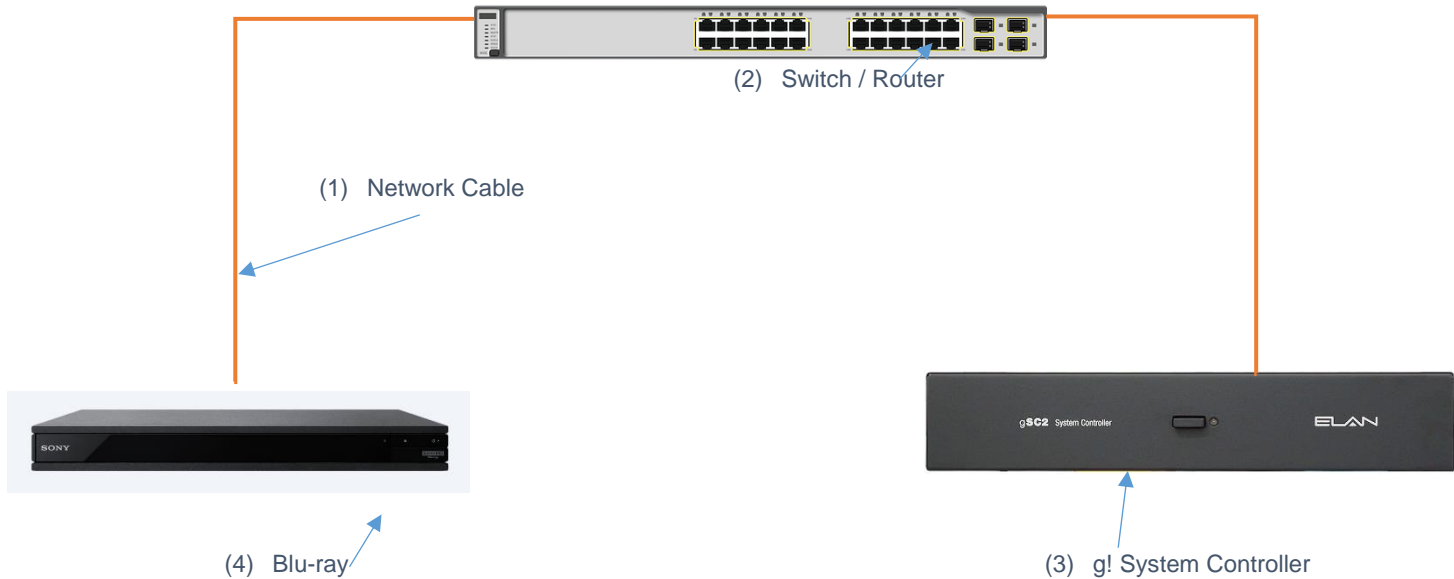
Intrinsic Group's drivers are created to the highest standard, developed with industry leading practices, including bench and real world field testing.

Intrinsic Group advise that dealers take advantage of our free show room driver to thoroughly test and familiarize themselves with our drivers and their capabilities before installing on a customer site.

Intrinsic Group offer dedicated support to help dealers, though Intrinsic Group Limited accept no liability for any loss, delays, damage or otherwise, whether resulting from the use of their drivers or otherwise. Drivers are provided without warranty with respect to the product they are controlling. Intrinsic Group do not guarantee the continuous functionality should the product manufacture implement a change to their product. We constantly update our drivers to improve functionality and remove any bugs that may arise, with updates being provided at no costs for the listed, supported models in this integration note. Major updates of product may lead to the need to purchase versions of drivers.

CONNECTION DIAGRAM: ETHERNET CONTROL

Refer to the Bill of Materials and Wiring Diagram that follow.



BILL OF MATERIALS

#	Device	Manufacturer	Part Number	Protocol	Connector Type
1	Blu-ray	Sony	Various	Ethernet	RJ-45 Female
2	g! Controller	ELAN	Various (e.g. SC2)	Ethernet	RJ-45 Female
3	Network Switch	Various	Various	Ethernet	RJ-45 Female
4	Network Cable	Various	Various	Ethernet	RJ-45 Male

BLU-RAY TV SETUP

Recommended Action : Static IP

We recommend you assign a static IP to your Blu-ray player for all interfaces it supports (Wired and Wifi).

Enable remote start:

Go to

Setup >> Network Settings >> Remote Start

Enable remote start. If this is not enabled ELAN will be unable to power the unit on via Wake On Lan.

q! CONFIGURATION

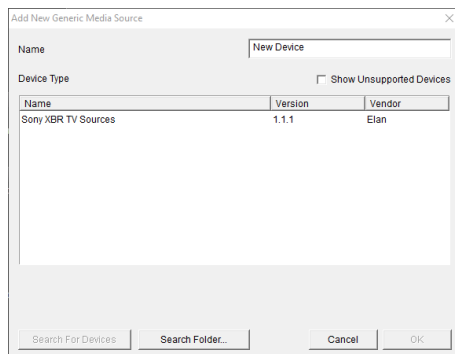
The installation process will involve loading a Generic Media Source driver from a downloaded file.

Note: No communication device is needed for this IP driver.

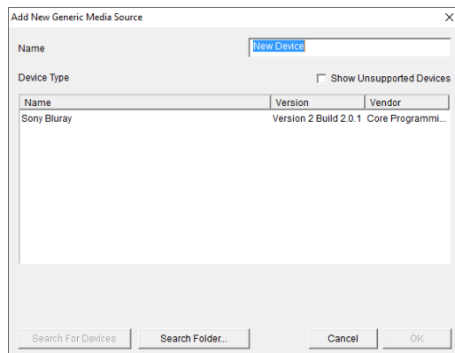
INSTALLATION PROCESS

It is recommended that you follow the below installation process to ensure you are running the latest version of the driver.

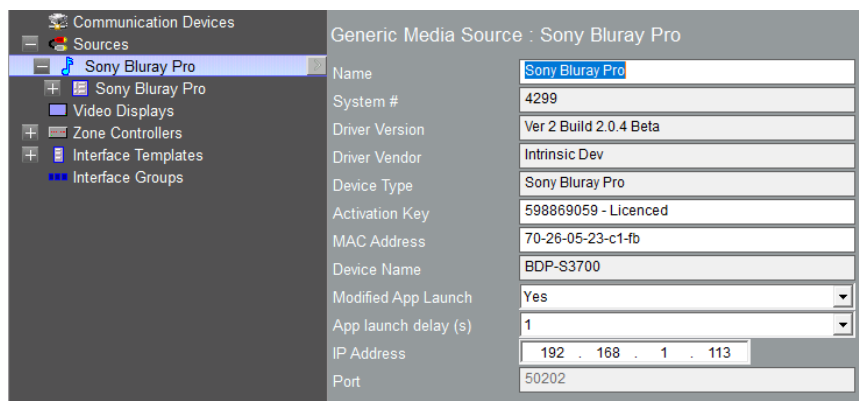
1. Download the latest version of the driver from the ELAN dealer support site or get it from your order confirmation email. If the file is zipped, then extract it to a known location.
2. Under the Media tab in configurator, right click sources and select Add New Generic Media Source.



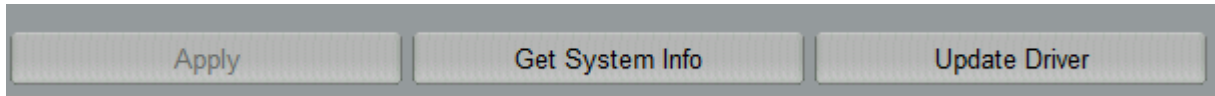
3. On the next window use the Search Folder button to point Configurator to the location you saved the driver.



4. Select the driver and click OK.



5. The driver activation is covered in the next section.
6. Enter the device IP address and click Apply.
7. Click the Get System Info button beside Apply and if the player has been setup correctly the MAC Address and friendly name of the player will be populated in configurator.



DIRECT APP LANUCHING

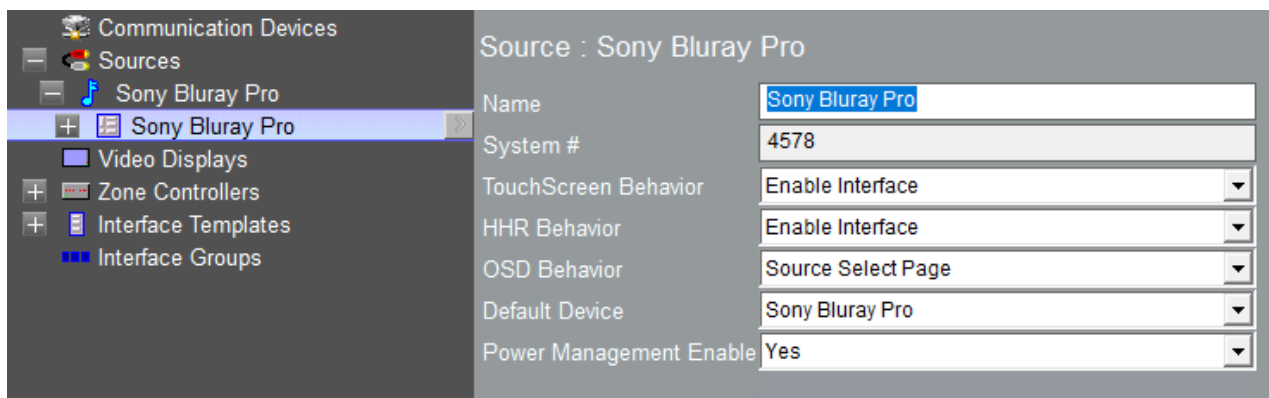
This driver has been designed to launch any apps installed on the player from the ELAN Viewer.

Points worth noting:

1. Apps may take 10-30 seconds to load if the player has been off. This is due to there being no network connection to the player when in standby.
2. Some Apps prevent the launching of other apps while they are loaded. Ie. You may be watching Netflix and unable to load YouTube. To avoid this the setting "Modified App Launch" comes set to yes by default. When enabled this sends the Home button command before the app command. The setting "App launch delay" sets the delay between the home button command and the app launch. Lower models players are less powerful and may need a longer pause between these commands.

POWER ON BY WAKE ON LAN (WOL)

This driver is capable of powering the player on using WOL. To enable this to happen automatically you will need to enable power management in ELAN.



DRIVER LICENSE

This driver requires a license key to function. Pricing and license keys can be obtained by visiting www.intrinsicdev.co.uk

The controller MAC address is needed to generate a license key.

INSTALLATION:

The license key is entered on the main properties page of the driver.

Generic Media Source : Apple TV	
Name	Apple TV
System #	27041
Driver Version	Ver 2 Build 2.0.23
Driver Vendor	Core Programming Limited
Device Type	Apple TV
Status	Apple TV 4 Connected OK
Activation Key	456378146 - Licensed
ELAN IP Address	192.168.1.20
IP Address	192 . 168 . 1 . 113
Port	3689

*Example Image

Once you enter the product license key as shown above click “Apply” to save it and then within 20 seconds the driver will process the key.

After 20 seconds the driver will update the Activation Key window with the status of the license key. To see this update, you must refresh the screen by selecting another tab or device and then going back to this driver. You will either see, as above, that the driver is activated correctly or, as below, the driver is not activated.

Activation Key	456378145 - Not Licensed
----------------	--------------------------

Please check the status of the driver activation before logging a support ticket.

g! CONFIGURATION DETAILS

The following table provides settings used in Configurator ...Please refer to the Configurator Reference Guide for more details.

In the table below:

- "<Select from list>" Select the appropriate item from drop down.
- "<User Defined>", etc. Type in the desired name for the item.
- "<Auto Detect>", etc. The system will auto detect this variable.

Devices	Variable Name	Settings (Ethernet)
Generic Media Source	Name	<User Defined> (Default <Auto Detect>)
	System #	<Auto Detect>
	Driver Version	<Auto Detect>
	Driver Vendor	Core Programming Limited
	Device Type	Sony Blu-ray Player
	Activation Key	<User Defined> (Enter key supplied by Intrinsic Dev)
	MAC Address	<Auto Detect>
	Device Name	<Auto Detect>
	Modified App Launch	See page 6

	App Launch Delay	See page 6
	IP Address	<User Defined> (Enter the IP address of the player)
	Port	<Auto Detect>

COMMON MISTAKES

1. Not having the latest firmware installed, this driver **REQUIRES** at least ELAN FW 8.2.212.
2. No communication device is needed.
3. Player does not switch on.
 - Check that the MAC address is populated in the driver settings.
 - Check Power Management is enabled.
 - Re read page 6
4. Apps do not load - If the player has been switched off apps may take 10-30 seconds to load.
5. Trouble launching apps. See direct app launching on page 6.

ELAN DEVELOPER PARTNER INFORMATION

This ELAN driver was written and supported by:



support@intrinsicdev.co.uk
www.intrinsicdev.co.uk