

Integration Note

Manufacturer:	Audac
Model Number(s):	MTX88
g! Core Module Version:	8.2.300
Driver Developer:	Intrinsic Group Limited
Document Revision Date:	15 th March 2018

Overview & Supported Features

This driver allows a g! system to communicate with an Audac MTX88 via Ethernet.

THE FOLLOWING OPTIONS ARE SUPPORTED BY THIS DRIVER:

Matrix Source Selection: The g! Viewer interface, zone slaving, or Event Maps can be used to select sources by zone from the g! system. Any input may be sent to any output.

Zone Volume Control: The g! Viewer interface can be used to control the volume in any zone of the matrix, with visual level shown.

Zone Power Control: The g! Viewer interface can be used to switch zones on or off.

One way control only. Driver does not provide any feedback.

Any feature not specifically noted as supported should be assumed to be unsupported.
--

Disclaimer

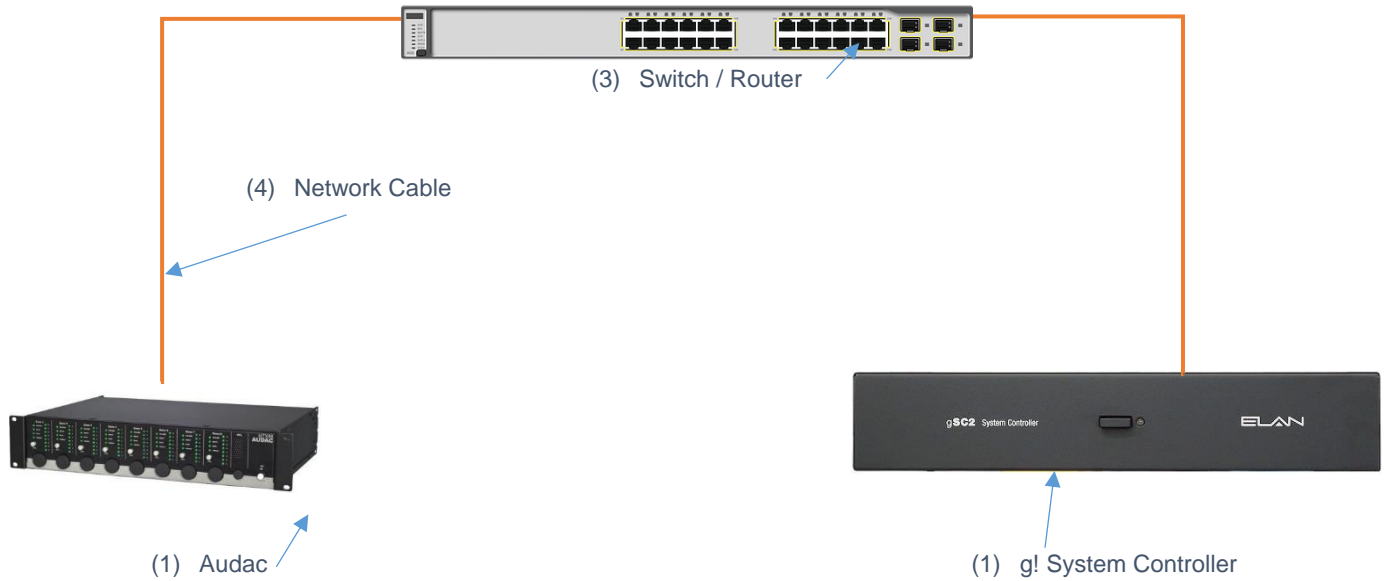
Intrinsic Group's drivers are created to the highest standard, developed with industry leading practices, including bench and real world field testing.

Intrinsic Group advise that dealers take advantage of our free show room driver to thoroughly test and familiarize themselves with our drivers and their capabilities before installing on a customer site.

Intrinsic Group offer dedicated support to help dealers, though Intrinsic Group Limited accept no liability for any loss, delays, damage or otherwise, whether resulting from the use of their drivers or otherwise. Drivers are provided without warranty with respect to the product they are controlling. Intrinsic Group do not guarantee the continuous functionality should the product manufacture implement a change to their product. We constantly update our drivers to improve functionality and remove any bugs that may arise, with updates being provided at no costs for the listed, supported models in this integration note. Major updates of product may lead to the need to purchase versions of drivers.

CONNECTION DIAGRAM: ETHERNET CONTROL

Refer to the Bill of Materials and Wiring Diagram that follow.



BILL OF MATERIALS

#	Device	Manufacturer	Part Number	Protocol	Connector Type
1	Audio Switcher	Audac	MTX88	Ethernet	RJ-45 Female
2	g! Controller	ELAN	Various (e.g. SC2)	Ethernet	RJ-45 Female
3	Network Switch	Various	Various	Ethernet	RJ-45 Female
4	Network Cable	Various	Various	Ethernet	RJ-45 Male

DEVICE SETUP

Recommended Action: Static IP

We recommend you assign a static IP to your device player for all interfaces it supports (Wired and Wifi).

The Audac MTX88 unit only supports one TCP connection. If you have been using another program or app to control it, we recommend you close this and power cycle the MTX88.

g! CONFIGURATION

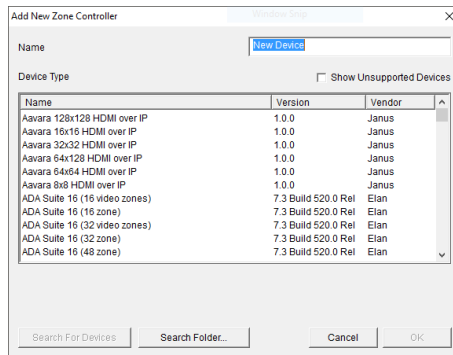
The installation process will involve loading a Zone Controller driver from a downloaded file.

No communication device is needed for this driver.

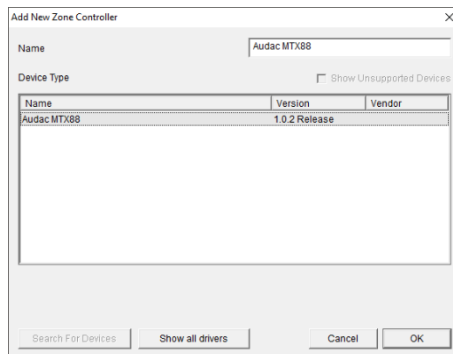
INSTALLATION PROCESS

It is recommended that you follow the below installation process in order to ensure you are running the latest version of the driver.

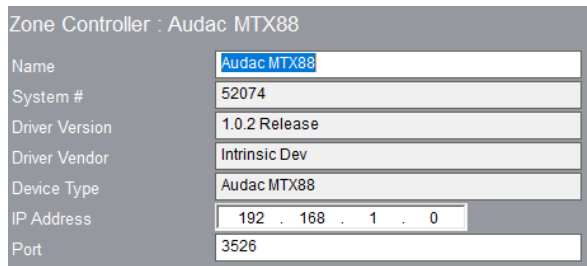
1. Download the latest version of the driver from the ELAN dealer support site.
2. Under the Media tab in configurator, add a new zone controller.



3. On the next window use the Search Folder button to point Configurator to the location you saved the driver.



4. Select the driver and click OK.



5. Enter your license key and IP address for the device, then click apply.

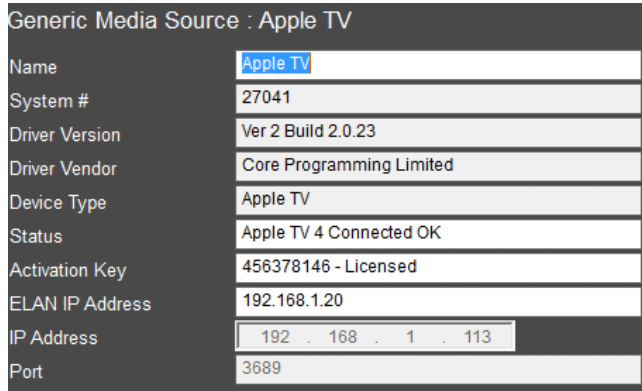
DRIVER LICENSE

This driver requires a license key to function. Pricing and license keys can be obtained by visiting www.intrinsicdev.co.uk

The controller MAC address is needed to generate a license key.

INSTALLATION:

The license key is entered on the main properties page of the driver.

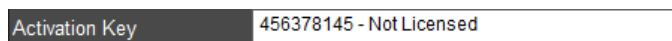


Generic Media Source : Apple TV	
Name	Apple TV
System #	27041
Driver Version	Ver 2 Build 2.0.23
Driver Vendor	Core Programming Limited
Device Type	Apple TV
Status	Apple TV 4 Connected OK
Activation Key	456378146 - Licensed
ELAN IP Address	192.168.1.20
IP Address	192 . 168 . 1 . 113
Port	3689

*Example Image

Once you enter the product license key as shown above click “Apply” to save it and then within 20 seconds the driver will process the key.

After 20 seconds the driver will update the Activation Key window with the status of the license key. To see this update, you must refresh the screen by selecting another tab or device and then going back to this driver. You will either see, as above, that the driver is activated correctly or, as below, the driver is not activated.



Activation Key	456378145 - Not Licensed
----------------	--------------------------

Please check the status of the driver activation before logging a support ticket.

COMMON MISTAKES

1. No communication device is needed.
2. No device control – see page 4 regarding TCP connections

ELAN DEVELOPER PARTNER INFORMATION

This ELAN driver was written and supported by:



support@intrinsicdev.co.uk
www.intrinsicdev.co.uk