

## Integration Note

Manufacturer:	Meridian
Model Number(s):	218
Control4 FW Version:	2.9+
Driver Developer:	Intrinsic Dev, part of Intrinsic Group Limited
Document Revision Date:	15/08/17

### Overview & Supported Features

This driver allows a Control4 system to communicate with a Meridian 218 via Ethernet to provide audio zone functionality.

**THE FOLLOWING OPTIONS ARE SUPPORTED BY THIS DRIVER:**

**Source Switching:** Select any of the 218's sources.

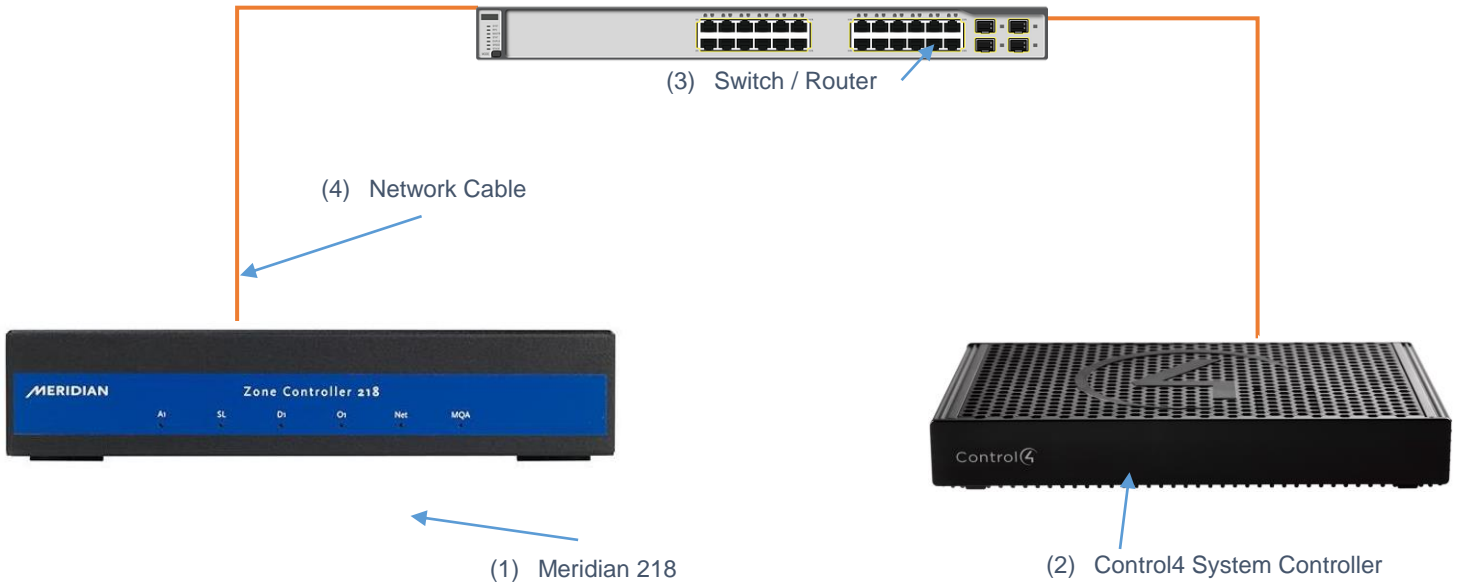
**Zone On/Off Control:** Two way status and control of on/off.

**Volume Control:** Two way volume control for each discrete output.

Any feature not specifically noted as supported should be assumed to be unsupported.
--------------------------------------------------------------------------------------

**CONNECTION DIAGRAM: ETHERNET CONTROL**

Refer to the Bill of Materials and Wiring Diagram that follow.



**BILL OF MATERIALS**

#	Device	Manufacturer	Part Number	Protocol	Connector Type
1	218	Meridian	218	Ethernet	RJ-45 Female
2	Control4 Controller	Control 4	Various (e.g. EA2)	Ethernet	RJ-45 Female
3	Network Switch	Various	Various	Ethernet	RJ-45 Female
4	Network Cable	Various	Various	Ethernet	RJ-45 Male

## **MERIDIAN 218 SETUP**

Set up your device as per the manufacturer's instructions.

A static IP address is required.

Once set up is complete, you can continue to follow the steps outlined in this guide.

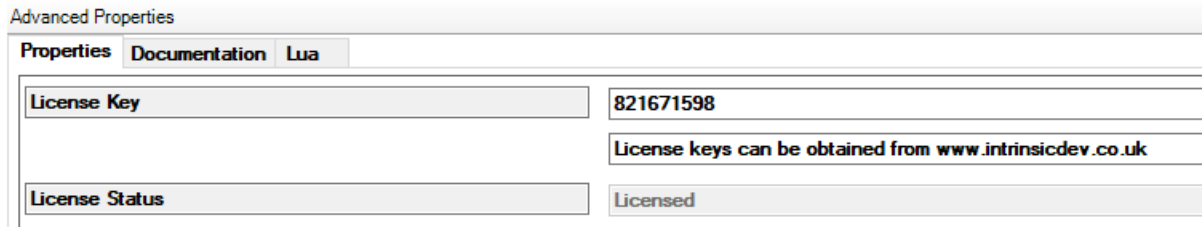
## **DRIVER LICENSE**

This driver requires a license key to function. Pricing and license keys can be obtained by visiting [www.intrinsicdev.co.uk](http://www.intrinsicdev.co.uk)

The Control4 controller MAC address is needed to generate a license key.

### **INSTALLATION:**

The license key is entered on the main properties page of the driver.



Advanced Properties

Properties Documentation Lua

License Key 821671598

License keys can be obtained from [www.intrinsicdev.co.uk](http://www.intrinsicdev.co.uk)

License Status Licensed

\*Example Image

Once you enter the product license key as shown above click “Apply” to save it and then within 20 seconds the driver will process the key.

After 20 seconds the driver will update the Activation Key window with the status of the license key. To see this update, you must refresh the screen by selecting another tab or device and then going back to this driver. You will either see, as above, that the driver is activated correctly or, as below, the driver is not activated.



License Status Not Licensed

Please check the status of the driver activation before logging a support ticket.

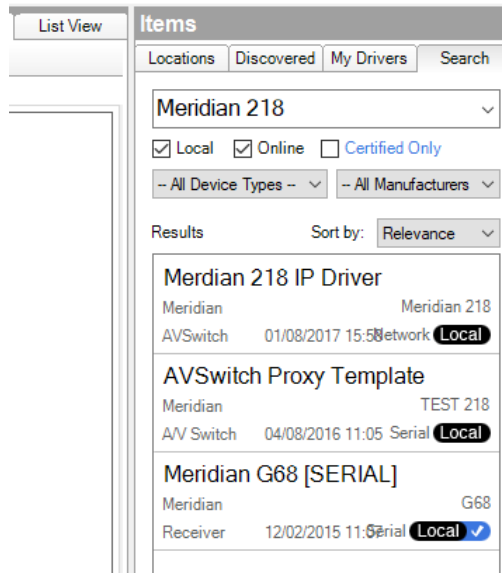
## Control4 CONFIGURATION

The installation process will involve loading a Media Zone driver from a downloaded file.

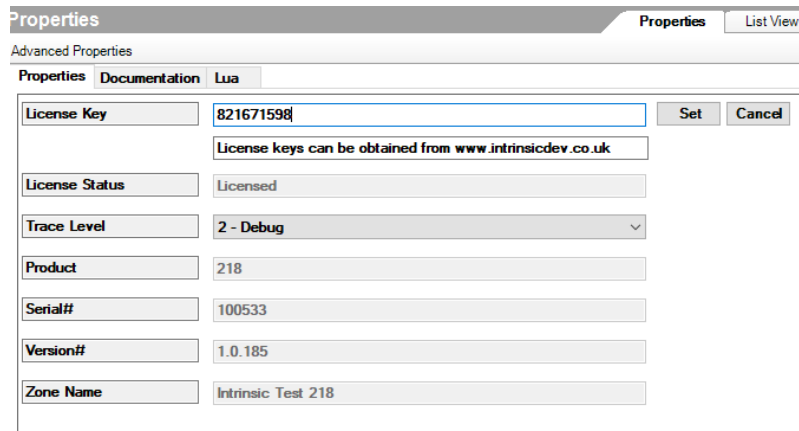
### INSTALLATION PROCESS

It is recommended that you follow the below installation process in order to ensure you are running the latest version of the driver.

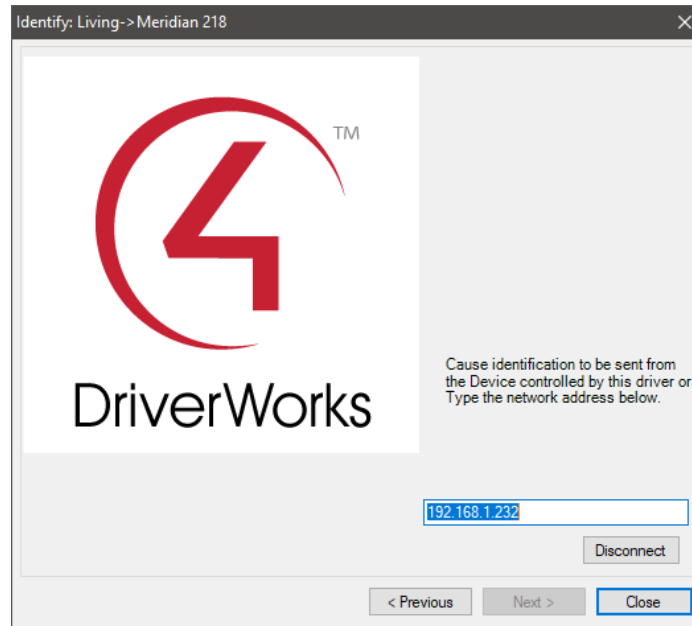
1. Download the latest version of the driver from the Intrinsic Dev website.
2. Under the Driver tab click add or update driver and select the file you have downloaded.
3. In System Design mode click search in the very top right corner and type "Meridian 218".



4. Install the driver by dragging to the correct room or by double clicking.
5. Enter your license key and click set.



6. In Connections mode, select network and set the IP address of the Meridian 218 by double clicking it.



## COMMON MISTAKES

1. Incorrect IP address entered
2. Failing to properly configure the system standalone, before integrating with Control 4

This driver was written and supported by:



[support@intrinsicdev.co.uk](mailto:support@intrinsicdev.co.uk)  
[www.intrinsicdev.co.uk](http://www.intrinsicdev.co.uk)