

Integration Note

Manufacturer:	Naim
Model Number(s):	Uniti Atom/Nova/Star
Crestron Processor Version:	Tested on 3 Series Processors, support for other versions not guaranteed
Driver Developer:	Intrinsic Dev, part of Intrinsic Group Limited
Document Revision Date:	14/05/2018

Overview & Supported Features

Intrinsic Group's Naim Uniti module replicates the allows a Crestron Processor to communicate with the Uniti Series via Ethernet (IP).

- IP control of Naim Uniti Range
- Automatic maintaining of TCP connection
- Source Switching
- Source Status
- Current Metadata (Now Playing and Album Artwork)
- 2 way status updates
- Volume +/- plus discrete volume options and mute
- IOS App Launching
- Power Control & Status

THE FOLLOWING OPTIONS ARE SUPPORTED BY THIS DRIVER:

This driver supports the following commands:

Zone On/Off Control: Two way status and control of on/off

Volume Control: Two way volume +/-, Discrete Volume

Source Switching: Select any of the sources on the Naim Uniti

Continued Dealer Support

Intrinsic Group's offer free licenses for showrooms and dealer's own homes – just drop us a support ticket.

All of our drivers are backed up by our online ticketing system.

Any feature not specifically noted as supported should be assumed to be unsupported.
--

Disclaimer

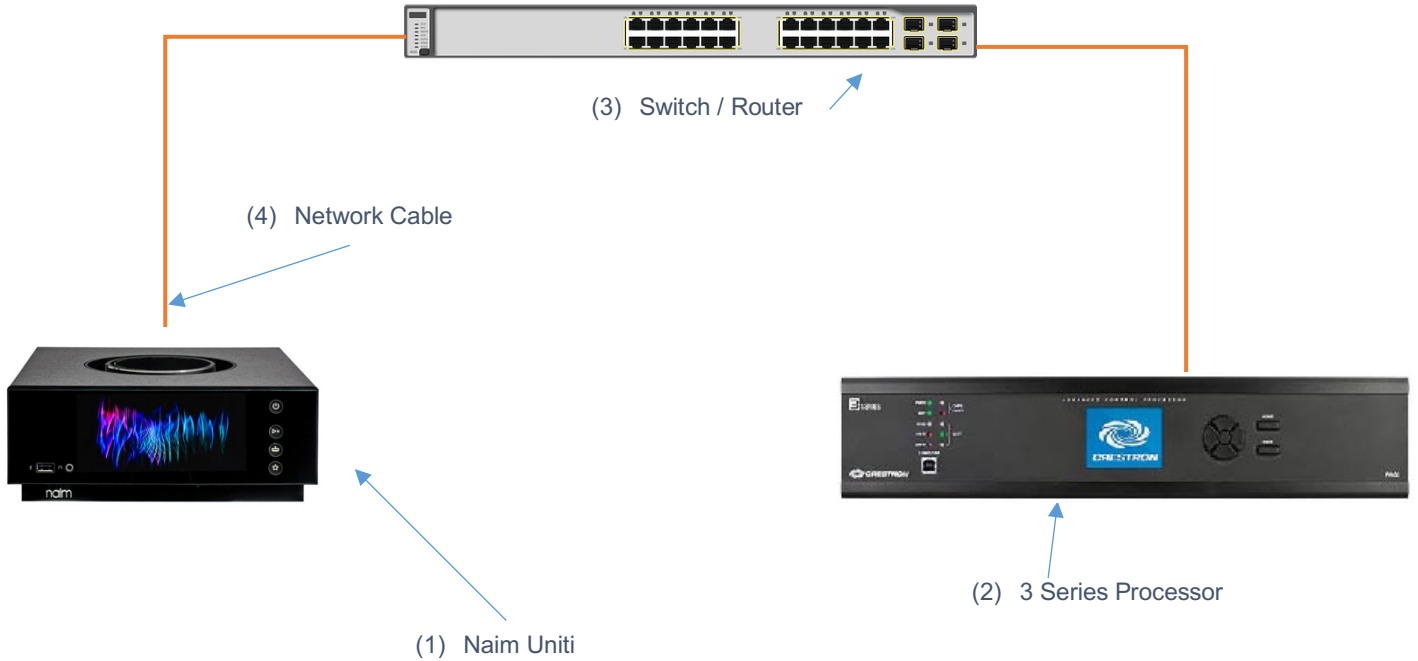
Intrinsic Group's drivers are created to the highest standard, developed with industry leading practices, including bench and real world field testing.

Intrinsic Group advise that dealers take advantage of our free show room driver to thoroughly test and familiarise themselves with our drivers and their capabilities before installing on a customer site.

Intrinsic Group offer dedicated support to help dealers, though Intrinsic Group Limited accept no liability for any loss, delays, damage or otherwise, whether resulting from the use of their drivers or otherwise. Drivers are provided without warranty with respect to the product they are controlling. Intrinsic Group do not guarantee the continuous functionality should the product manufacture implement a change to their product. We constantly update our drivers to improve functionality and remove any bugs that may arise, with updates being provided at no costs for the listed, supported models in this integration note. Major updates of product may lead to the need to purchase versions of drivers.

CONNECTION DIAGRAM: ETHERNET CONTROL

Refer to the Bill of Materials and Wiring Diagram that follow.



BILL OF MATERIALS

#	Device	Manufacturer	Part Number	Protocol	Connector Type
1	Uniti	Naim	Atom, Star, Nova	Ethernet	RJ-45 Female
2	3 Series Processor	Crestron	Various (e.g. RMC3, CP3)	Ethernet	RJ-45 Female
3	Network Switch	Various	Various	Ethernet	RJ-45 Female
4	Network Cable	Various	Various	Ethernet	RJ-45 Male

NAIM UNITI SETUP

Recommended Action : Static IP

We recommend you assign a static IP to your Naim Uniti. Please follow the manufacturer's instructions to configure your Naim Uniti before connecting to a control system.

DRIVER LICENSE

This driver requires a license key to function. Pricing and license keys can be obtained by visiting www.intrinsicdev.co.uk . License keys are issued on a per processor basis. You only need a single license key for multiple installations on the same processor.

The Crestron controller MAC address is needed to generate a license key. If you are in doubt, a free MAC address finder tool is available from our website.

INSTALLATION:

The license key is entered on the top of the module in the License_Key\$ parameter field.

Naim Uniti Star (IntrinsicDev) v1.01	
Naim_IP_Address\$	192.168.26.193
License_Key\$	798146446
Debug_Status\$	No Debug

*Example Image

Licensing takes place automatically, after you have uploaded your Simpl Windows program to the processor.

Please check that you have correctly entered your processor's MAC on the website and the license key you received before logging a support ticket.

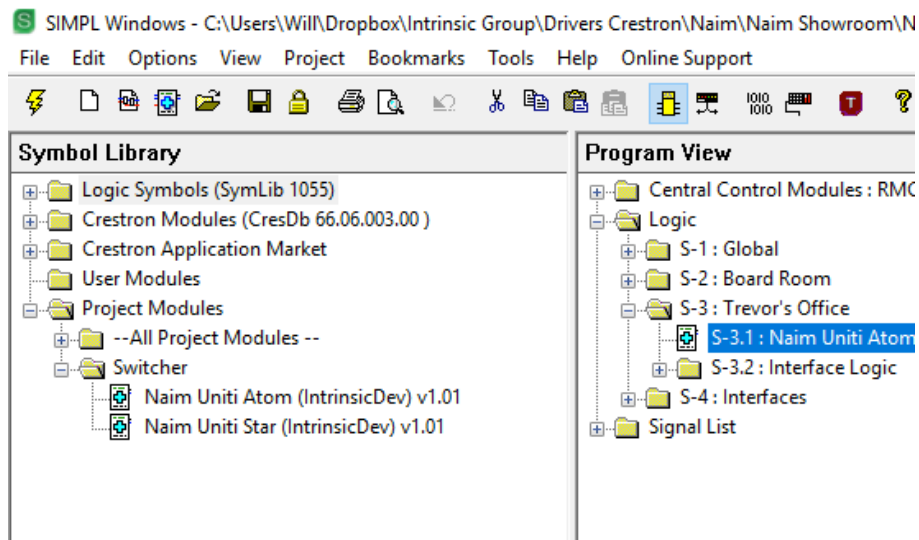
Simpl Windows CONFIGURATION

The installation process will involve loading a SIMPL+ Module into your SIMPL Windows file. To do this you will need to place the downloaded files either in the folder containing your project file (smw) or in you SIMPL Windows installation's User SIMP+ folder to make it appear in all programs.

Each Uniti Module requires a different instance of the Naim Uniti XXXX (Intrinsic Dev) Module within the program, however, you only need to purchase on license per controller – the same license key works throughout.

INSTALLATION PROCESS

1. Download the latest version of the driver from the Intrinsic Dev website.
2. Copy the download files to the folder containing your project file (smw) or in you SIMPL Windows installation's User SIMP+ folder to make it appear in all programs.
3. Select the Module which will be listed as a Switcher



4. Enter the IP Address of the Uniti in the appropriately labelled parameter field. Once complete enter the license key in this relevant box

Naim Uniti Star (IntrinsicDev) v1.01	
Naim_IP_Address\$	192.168.26.193
License_Key\$	798146446
Debug_Status\$	No Debug

5. Complete your programming as required. When any of the signals is driven high, the module functions in the same way as the Naim IP Control app and so transmits the corresponding command to the Uniti Player that you are controlling. Where keys should repeat, such as volume, the driver automatically handles repeat presses for as long as the signal is driven high at the recommend speed of the Uniti Player. The driver constantly listens for changes and also carries out updates immediately after changing source.
6. Compile and upload your completed program to your processor.

CONFIGURATION DETAILS

Naim Uniti Star (IntrinsicDev) v1.01			
Naim_IP_Address\$	192.168.26.193		
License_Key\$	798146446		
Debug_Status\$	No Debug		
Star_Standby	Standby	Power_FB	Star_Power_FB
Star_Vol_Up	VOL_UP	Mute_FB	Star_Mute_FB
Star_Vol_Down	VOL_DOWN		
Star_Vol_Mute_On	VOL_MUTE_ON		
Star_Vol_Mute_Off	VOL_MUTE_OFF		
Star_Analogue	Analogue	Analogue_Is_Selected	Star_Analogue_is_Selected
Star_Digital_1	Digital_1	Digital_1_Is_Selected	Star_Digital_1_Is_Selected
Star_Digital_2	Digital_2	Digital_2_Is_Selected	Star_Digital_2_Is_Selected
Star_Digital_3	Digital_3	Digital_3_Is_Selected	Star_Digital_3_Is_Selected
Star_Bluetooth	Bluetooth	Bluetooth_Is_Selected	Star_Bluetooth_Is_Selected
Star_Internet_Radio	Internet_Radio	Internet_Radio_Is_Selected	Star_net_Radio_Is_Selected
Star_Airplay	Airplay	Airplay_Is_Selected	Star_Airplay_is_Selected
Star_Google_Cast	Google_Cast	Google_Cast_Is_Selected	Star_Google_Cast_Is_Selected
Star_Spotify	Spotify	Spotify_Is_Selected	Star_Spotify_Is_Selected
Star_Tidal	Tidal	Tidal_Is_Selected	Star_Tidal_Is_Selected
Star_UPnP	uPnP	uPnP_Is_Selected	Star_uPNP_is_Selected
Star_USB	USB	USB_Is_Selected	Star_USB_Is_Selected
Star_HDMI	HDMI	HDMI_Is_Selected	Star_HDMI_Is_Selected
		MultiRoom_Is_Selected	Star_Multiroom_Is_Selected
Star_Play/Pause	PlayPause		
Star_Next	Next		
Star_Prev	Prev		
Star_Stop	Stop		
Star_Pause	Pause		
Star_Unpause	Unpause		
Star_Play	Play		
Star_Vol_Lvl_In#	VOL_LVL_IN#	VOL_LVL_FB#	Star_Vol_Lvl_FB#
		Current_Meta\$	Star_Current_Meta\$
		Album_Artwork\$	Star_Album_Artwork\$
		AppURL\$	Star_AppURL\$
[Reference Name]			

COMMON MISTAKES

1. Driver doesn't license - incorrect license key entered (usually the wrong MAC entered at checkout)
2. No control – your driver is not licensed (check debug) or the IP Address of your Unit is incorrect
3. Failing to properly assign a static IP address or DHCP reservation

This Crestron module was written and supported by:



support@intrinsicdev.co.uk
www.intrinsicdev.co.uk