

Integration Note

Manufacturer:	Qmotion
Model Number(s):	QzHub
g! Core Module Version:	8.2.650.2
Driver Developer:	Intrinsic Group Limited
Document Revision Date:	1 st November 2018

Overview & Supported Features

This driver allows a g! system to communicate with QzHub via Ethernet for lighting control.

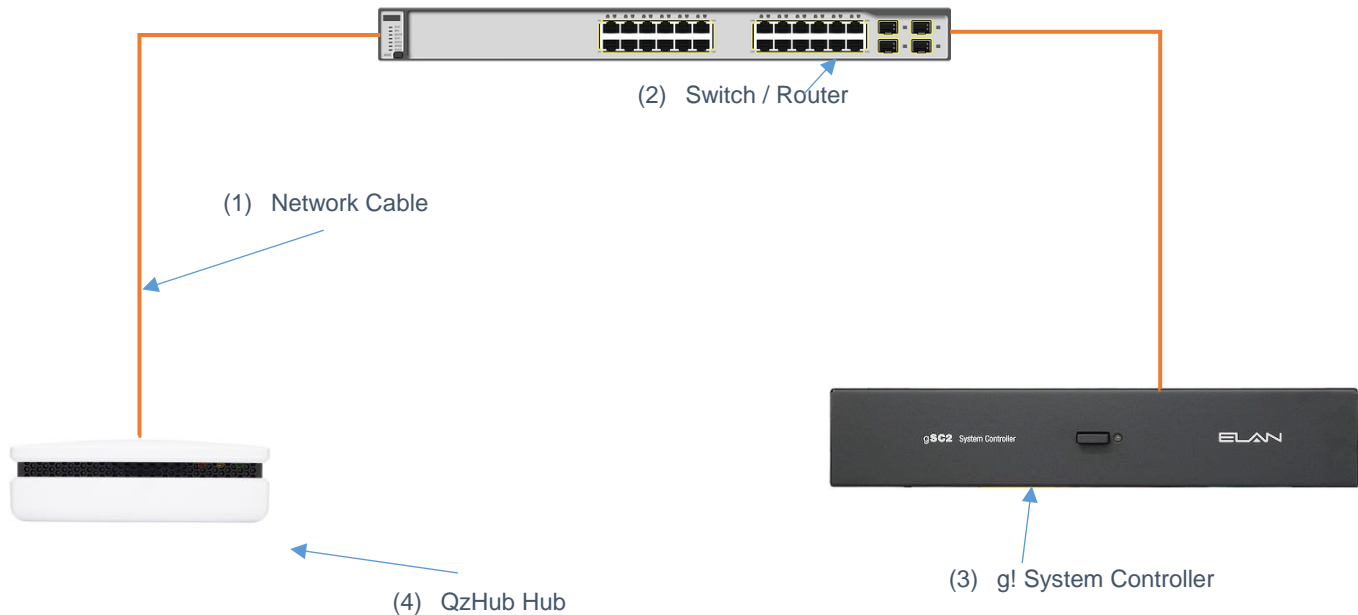
THE FOLLOWING OPTIONS ARE SUPPORTED BY THIS DRIVER:

Auto Discovery: Once paired the driver can auto discover shade devices and install them automatically in ELAN with the user assigned names.

Any feature not specifically noted as supported should be assumed to be unsupported.
--

CONNECTION DIAGRAM: ETHERNET CONTROL

Refer to the Bill of Materials and Wiring Diagram that follow.



BILL OF MATERIALS

#	Device	Manufacturer	Part Number	Protocol	Connector Type
1	Hub	Qmotion	QzHub	Ethernet	RJ-45 Female
2	g! Controller	ELAN	Various (e.g. SC2)	Ethernet	RJ-45 Female
3	Network Switch	Various	Various	Ethernet	RJ-45 Female
4	Network Cable	Various	Various	Ethernet	RJ-45 Male

QZHUB SETUP

Add and setup devices as described in QzHub app. The system should be fully functional and tested before pairing to ELAN g!.

A static IP address is required.

DRIVER LICENSE

This driver requires a license key to function. Pricing and license keys can be obtained by visiting www.intrinsicdev.co.uk

The controller MAC address is needed to generate a license key.

INSTALLATION:

The license key is entered on the main properties page of the driver.

Generic Media Source : Apple TV	
Name	Apple TV
System #	27041
Driver Version	Ver 2 Build 2.0.23
Driver Vendor	Core Programming Limited
Device Type	Apple TV
Status	Apple TV 4 Connected OK
Activation Key	456378146 - Licensed
ELAN IP Address	192.168.1.20
IP Address	192 . 168 . 1 . 113
Port	3689

*Example Image

Once you enter the product license key as shown above click “Apply” to save it and then within 20 seconds the driver will process the key.

After 20 seconds the driver will update the Activation Key window with the status of the license key. To see this update, you must refresh the screen by selecting another tab or device and then going back to this driver. You will either see, as above, that the driver is activated correctly or, as below, the driver is not activated.

Activation Key	456378145 - Not Licensed
----------------	--------------------------

Please check the status of the driver activation before logging a support ticket.

q! CONFIGURATION

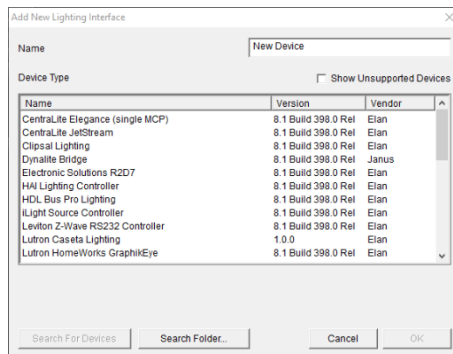
The installation process will involve loading a Lighting Interface driver from a downloaded file.

Note: No communication device is needed for this IP driver.

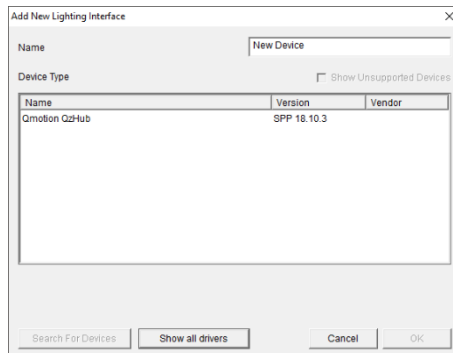
INSTALLATION PROCESS

It is recommended that you follow the below installation process in order to ensure you are running the latest version of the driver.

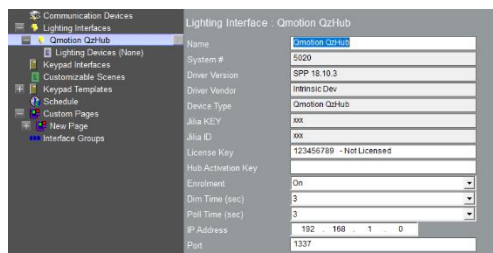
1. Download the latest version of the driver from the ELAN dealer support site.
2. Under the Lighting tab in configurator, add a new lighting interface.



3. On the next window use the Search Folder button to point Configurator to the location you saved the driver.



4. Select the driver and click OK.



5. Enter your license key and bridge IP address.

6. The QzHub ships with a card that has the hub activation key printed on it. Type this key into the activation key in gTools. If your hub did not ship with this or if you have misplaced this, please contact Qmotion – setup CANNOT continue.
7. To put the hub in to pairing mode press and hold the button beside the power connection for 10-15 seconds until the yellow and green lights on the front flash together. Then press the “Pairing” button in gTools.
8. When pairing is complete a Key & ID will appear in configurator. You may have to refresh the configurator page to see these. To do this switch to another tab and then back to lighting.

Jilia KEY	eyJ0eXAiOiJKV1QiLCJhbGciOiJIUzI1NiJ9.eyJhY2Nl
Jilia ID	3f665d02-3e7e-454a-b8f1-421d93572245

9. Once paired the driver will start discovering any compatible connected devices.
10. Switch Controls and where appropriate Dimming controls can then be added to custom pages to give you control over your Hue devices.

If for any reason you need to unpair the hub from ELAN simply click the “Clear Pairing” button. ELAN will NOT be able to communicate with the hub until the pairing has been completed again.

g! CONFIGURATION DETAILS

The following table provides settings used in Configurator ... Please refer to the Configurator Reference Guide for more details.

In the table below:

- "<Select from list>" Select the appropriate item from drop down.
- "<User Defined>", etc. Type in the desired name for the item.
- "<Auto Detect>", etc. The system will auto detect this variable.

Devices	Variable Name	Settings (Ethernet)
Lighting Interface	Name	<User Defined> (Default <Auto Detect>)
	System #	<Auto Detect>
	Driver Version	<Auto Detect>
	Driver Vendor	Intrinsic Dev
	Device Type	QzHub
	Activation Key	<User Defined> (Enter key supplied by Intrinsic Dev)
	HubActivation Key	<User Defined> (Enter key on card shipped with hub)
	Dim Time	<Default 3> Time for dimming curve.
	Poll Time	<Default 3> ELAN status update interval. Do not set below 1.
	IP Address	<User Defined> (Enter static IP address of matrix)
	Port	<Auto Detect>

COMMON MISTAKES

1. Only compatible with QzHub.
2. No communication device is needed.
3. If any devices show up as “NONAMEFOUND” then they have not been setup correctly in the QzHub app. Complete the setup and delete the device and wait for the driver to rediscover.

ELAN DEVELOPER PARTNER INFORMATION

This ELAN driver was written and supported by:



support@intrinsicdev.co.uk
www.intrinsicdev.co.uk